

本图册受知识产权保护，翻版必究。  
This book is protected by intellectual property rights, all rights reserved.  
This catalog is the four printing, with contents updated. Please order according to this edition.



STOCK CODE **872315**  
股票代码：872315

## VANJOIN GROUP 威骏（湖北）高新实业股份有限公司

**Headquarter** Floor 14, Golden Block, Poly Champagne International Building,  
Hanxi 1st Road, Qiaokou District, Wuhan, Hubei, China 430034  
**公司总部** 武汉市硚口区保利香槟国际 邮编：430034

**Production Base** Jingshan Economic Development Zone, Hubei, China  
**生产基地** 湖北京山经济开发区

**Tel/电话** (0086)-27-82801008  
**Mob/手机** Overseas 国外：(0086)13659879642;  
After-sale Service Hotline 售后电话：(0086)13657290777

**Website/网址** www.vanjoinbuild.com www.wallsandwichpanel.com

Scan for Website  
关注官网

# WALL PANEL



## Green Wall Solution

绿色墙体解决方案

## JOINING HANDS WITH VANJOIN

Giving More Greenness Back  
to the Earth by Technology.



企业愿景  
携手威骏  
用科技还地球  
一些绿色

# COMPANY PHILOSOPHY

## 企业理念

威骏（湖北）高新实业股份有限公司成立于2006年，位于九省通衢的江城武汉。

历经十多年的快速发展，威骏集团已经拥有威骏（湖北）高新实业股份有限公司、湖北京骏建筑有限公司、艾科豪斯（武汉）新材料有限公司、徐州威骏五金工具制造有限公司、万卓（武汉）新材料有限公司、万卓（江苏）新材料有限公司等多家全资子公司。

威骏现已成为集轻质节能保温墙体材料及配套生产线、新型生态饰面材料及配套生产线、生态节能集成住宅的设计、研发、生产、生产技术输出及海内外销售于一体的多元大型集团公司。威骏股份已在全国股转系统挂牌上市，股票代码872315。

Vanjoin Group was established in 2006, located in Wuhan City, with convenient transportation.

With over 10 years' rapid development, Vanjoin owns 6 wholly-owned subsidiaries: Vanjoin Group, Hubei Vanjoin Building Co., Ltd., Ecohouse (Wuhan) New Material Co., Ltd., Xuzhou Vanjoin Hardware Tools Manufacturing Co., Ltd., Vanjoin (Wuhan) New Material Co., Ltd. and Vanjoin (Jiangsu) New Material Co., Ltd.

Vanjoin Group has now become a diversified group company with design, R&D, manufacturing, production technology export and international sales for lightweight energy saving insulated wall material and related production line, new ecological decorative material and related production line, as well as ecological energy-saving integrated houses. VANJOIN has been listed with Stock Code 872315.



### Vanjoin's Core Values 企业核心价值

忠诚敦厚 人之根基  
博观约取 厚积薄发

Loyalty and sincerity, foundation of a person; wide view and frugal use, profound accumulation and gradual delivery.



### Service Concept 服务理念

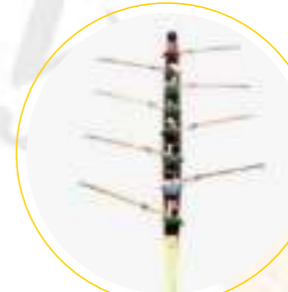
爱人者 人恒爱 敬人者 人恒敬  
Love and be loved; respect and be respected.



### Business Philosophy 经营哲学

小胜靠智 大胜靠德  
居安思危 有备无患

Narrow victory by wisdom, solid victory by morality; being vigilant in peace time, forethought prevents calamity.



### Quality Policy 质量方针

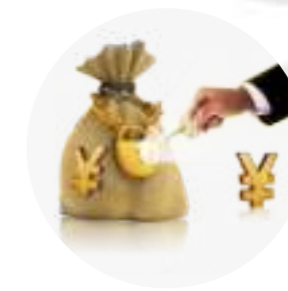
您的满意是我们的唯一使命  
Your satisfaction is our only mission.



### Vanjoin's Vision 企业愿景

用科技还地球一些绿色

Joining hands with Vanjoin; giving more greenness back to the earth by technology.



### Vanjoin's Mission 企业使命

为天下谋繁盛 为社会谋进取  
为企业谋卓越 为员工谋福祉

Seeking prosperity for the world, progress for society, excellence for the enterprise, welfare for the employees.



# PRODUCT PRESENTATION

产 品 介 绍

## Raw Material /原料篇

The raw materials are derived from nature, turn waste into treasure to the utmost; sticking to sustainable green production and paying for environmental protection.

原材料源自天然,最大限度变废为宝,坚持绿色生产,为环保买单。



### Ceramicite 陶粒

Silt-made Ceramicite  
淤泥制备的陶粒

### Foam 泡沫

Recycling of Waste Foam  
废旧泡沫回收利用

### Plant Fiber 植物纤维

Plant Fiber Reuse  
植物纤维再利用

# LIGHT WEIGHT COMPOUND SANDWICH PANEL

威 骏 轻 质 节 能 板 材



## Finished Products /成品篇

The light weight compound sandwich panel is a kind of light weight energy saving compound board, taking fiber reinforced calcium silicate board or fiber cement board as surface panel, with cement, EPS, sand, plant fiber etc., as fillers, to be compounded at one time.

Also can fill with the industrial silt ceramicite, industrial waste coal slag or fly ash, construction demolition waste building residue, industrial waste desulphurization gypsum, and other waste recycling and natural lightweight materials such as natural volcanic stone, plant nucleus, etc. It has the advantages with low cost, waste recycling, and environmental protection on raw

materials, also has the advantages of heat insulation, energy-saving, high strength, earthquake resistance, fireproof, sound insulation, dampproof, durable, can-nail-can-hang, light weight, and convenient construction, etc.

It can replace construction materials like red brick, air brick, color-coated steel sandwichboard, gypsum block, wire spatial grid structure perlite board, perlite porous board, etc. It can be widely applied to various high and low buildings such as hotel, apartment, villa, school, industrial plant, economical house, refugee house, prefab house, house reconstruction, etc.

威骏轻质节能板材是以纤维增强硅钙板或水泥纤维板作为面板,中间填充水泥、EPS、砂子、植物纤维等一次复合形成的一种轻质节能复合板材。

也可填充工业淤泥粗加工而成的陶粒、工业生产废煤渣或粉煤灰、建筑拆迁废旧建筑残渣、工业生产废脱硫石膏以及天然火山石、植物核等废旧回收物和天然轻质材料,具有低成本、利废环保的原料优势,而且具有保温节能、高强抗震、防火、隔音、防潮耐久、能钉挂吊、重量轻、施工方便等优势。

本产品可取代传统红砖、空心砖、彩钢夹芯板、石膏砌块、钢丝网架珍珠岩、珍珠岩多孔板等建筑材料,广泛用于各类高低层建筑墙体,如:酒店、高层公寓、别墅、学校、工业厂房、经济适用房、难民安置房、活动板房、旧房改造等等均可适用。





VANJOIN Factories /工厂篇

# EXPERT TEAM

专家团队

Talents /人才篇



VANJOIN has established a wide range of technical cooperation with Wuhan University, Wuhan Engineering University, Wuhan Textile University and many other colleges and universities, scientific research institutions and new materials industry associations, strongly invest in R & D, and established the core R & D and production base by 18 Doctors and masters with high education background.

Our company has the honor to get many patents, obtained the national product quality certifications, and management system certifications including SGS, CE, Green Label form Singapore, Alibaba golden supplier, ISO9001 quality management system, ISO14001 environmental management system, and OHSAS18001 occupational health and safety management system.

After ten years of development, our company owns an excellent scientific research service team, and with the positive and innovative spirit of exploration, we solved a number of technical problems for customers.

公司与武汉大学、武汉工程大学、武汉纺织大学等多所高校及科学研究机构、新材料行业协会等机构相关专家学者建立了广泛的技术合作关系，坚持大力研发投入，并建立由18位博士、硕士等学历背景人才为核心的研发生产基地。

公司先后荣获多项国家发明专利，取得各项国内外产品质量认证、管理体系认证，包括：SGS产品检测认证、CE产品检测认证、新加坡GREEN LABEL绿色产品认证、阿里巴巴金品诚企、ISO9001质量管理体系、ISO14001环境管理体系和OHSAS18001职业健康安全管理体系等。

经过十年的风雨历程，公司拥有了一支优质的科研服务团队，并凭着积极创新务实的探索精神为客户解决了众多的技术难题。



Qi Xu Doctor  
徐琪 博士

研究方向：功能高分子材料，复合材料  
Research Direction: Functional polymer materials, composite materials



Sanping Zhao Doctor  
赵三平 博士

研究方向：高性能树脂合成及其复合材料；环保型增塑剂及其产业化  
Research Direction: High performance resin synthesis and composite materials; Environmental friendly plasticizer and its industrialization



Huili Fu Doctor  
付慧莉 博士

研究方向：研究领域为生物可降解高分子材料  
Research Direction: Biodegradable polymer materials



Zhaocheng Ma Doctor  
马兆成 博士

研究方向：天然生物材料，废旧材料的循环利用  
Research Direction: Natural biomaterials, recycling of waste materials



Chunyu Chang Doctor  
常春雨 博士

研究方向：纳米高分子材料，天然高分子材料  
Research Direction: Nano polymer materials, natural macro-molecular materials



Chuanjie Zhang Doctor  
张传杰 博士

研究方向：高性能树脂合成及其复合材料  
Research Direction: High performance resin synthesis and composite materials





板材CE证书  
CE Certificate for VJ Panels



板材粘合砂浆CE证书  
CE Certificate for VJ Cement Mortar



质量管理体系  
Quality Management System Certificate



环境管理体系  
Environmental Management System Certificate



板材测试报告  
Panel Test Report



隔音测试  
Sound Insulation Test



防火测试  
Panel Fireproof Test



有害物质检测  
Test Report for Radioactivity



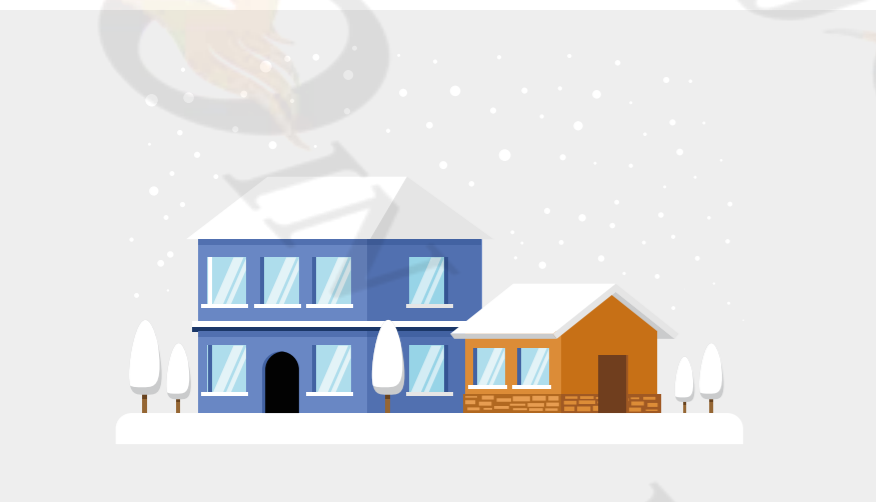
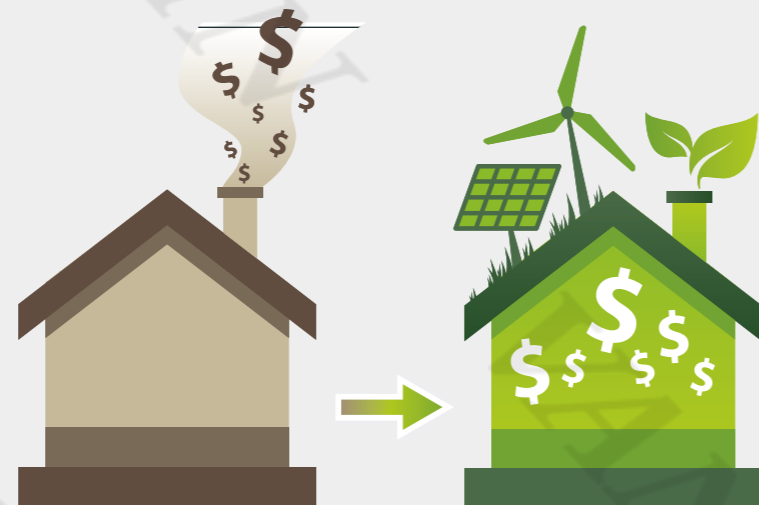
# LIGHT WEIGHT ENERGY-SAVING PANEL FEATURES

威骏轻质节能板材产品特性

## Energy Saving Wall Sandwich Panel & Green Environmental Protection 节能板材 绿色环保

威骏轻质节能板材是以纤维增强硅钙板或水泥纤维板作为面板，中间填充水泥、EPS、砂子、植物纤维等一次复合形成的一种轻质节能复合板材。

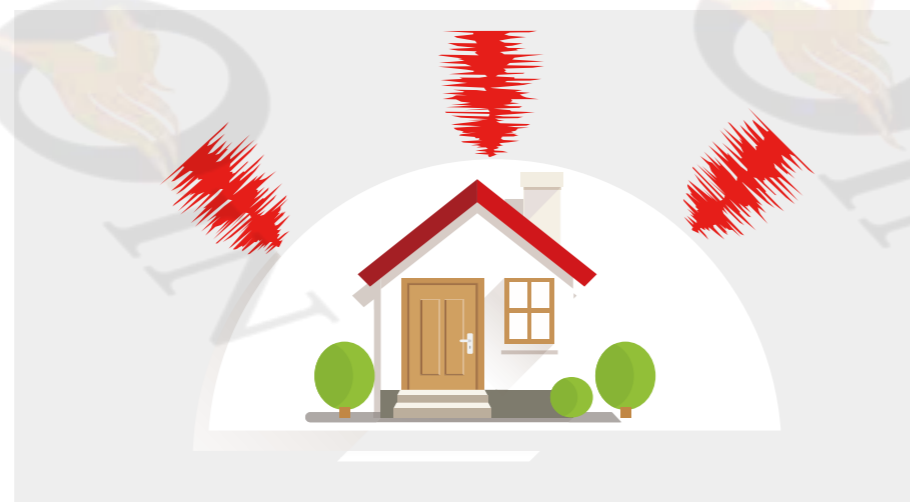
The light weight and energy-saving compound sandwich panel is taking fiber reinforced calcium silicate board or fiber cement board as surface boards with cement, EPS, ceramicite, plant fiber, etc., as fillers, to be compounded at one time.



## Best Heat Insulation / 保温

先进的制造工艺，加上自身内部的结构保证了其良好的保温隔热功能，不仅具备居住最优的温度及湿度指数，还能节约能源，实现低碳生活。

The advanced manufacturing process and VJ panels' internal structure ensure its good thermal insulation and heat preservation functions. It not only has the optimal temperature and humidity index, but also saves energy and achieves low carbon life.



## Sound Insulation / 隔音

威骏轻质节能板材现场测试隔音可达50-60dB，为您的安静舒适保驾护航。Your comfort and quietness can be protected since the sound insulation of Vanjoil light weight and energy saving wall panels have been on-site tested at 50-60dB.



## Waterproof & Dampproof 防水防潮

威骏轻质墙板产品芯材结构紧密并采用优质硅酸钙板作为面板，因此产品具备良好的防水防潮功能。As the core materials are with tight structure, and adopting quality calcium silicate board as surface boards, VJ panels has excellent waterproof and dampproof functions.



## Highest Fireproof Level 最高防火级别

威骏轻质节能板材1000°C高温下，耐火大于4小时不散发有毒有害气体、不坍塌，不燃性能达到A级防火。Under 1000°C high temperature over 4 hours, VJ panels emit no toxic, no harmful gases, no collapse, non-combustible performance reaches Level A.



## Resistance to Seismic Movement 抗震性

威骏轻质节能板材安装成型后呈现整体网状墙体结构，可抵抗8级地震及13级风速，即使在相对极端的自然灾害情况下也能够保障您的安全。After VJ panels' installation, it forms the overall mesh wall structure which can resist Level 8 earthquake and Grade 13 wind speed, and it can protect your safety even in extreme natural disasters.



## Area Saving 节省面积

威骏轻质节能板材较传统材料可节约5%空间，让您花同样的钱，享受更大的私人空间。

Compared with traditional building materials, VJ panels can save 5% space, so you can enjoy bigger private space at the same cost.



# LIGHT WEIGHT ENERGY-SAVING PANEL FEATURES

威骏轻质节能板材产品特性

Lightweight



Fireproof



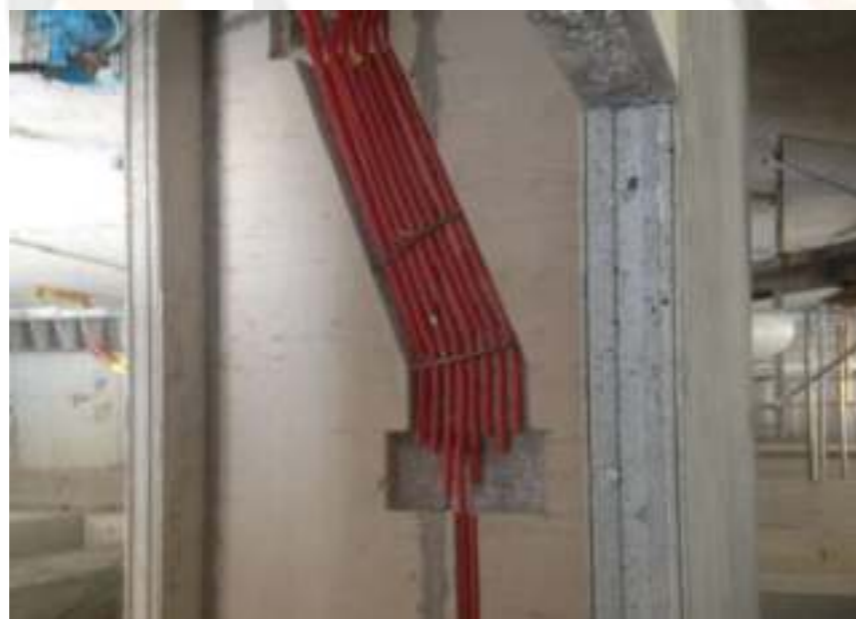
Waterproof



Easy to Cut



Pipe Embedding



Best Hanging Strength





# GREEN WALL SYSTEM 绿色墙体系统

## 5 步曲

**GREEN WALL DECORATION INTEGRATION**  
绿色墙体装饰一体化



1 VJ轻质墙板  
VJ Light Weight Compound Sandwich Panel



2 VJ粘结剂  
VJ Adhesive



3 VJ抗裂砂浆和网格布  
VJ Anti-crack Mortar and Fiberglass Mesh



4 VJ腻子粉  
VJ Skim Coat



5 VJ软瓷  
VJ Flexible Tile

一站式解决您的房屋建设  
搭配使用更加省心, 快速,  
安全。

One-stop solution to make your home  
construction more carefree, fast and secure.

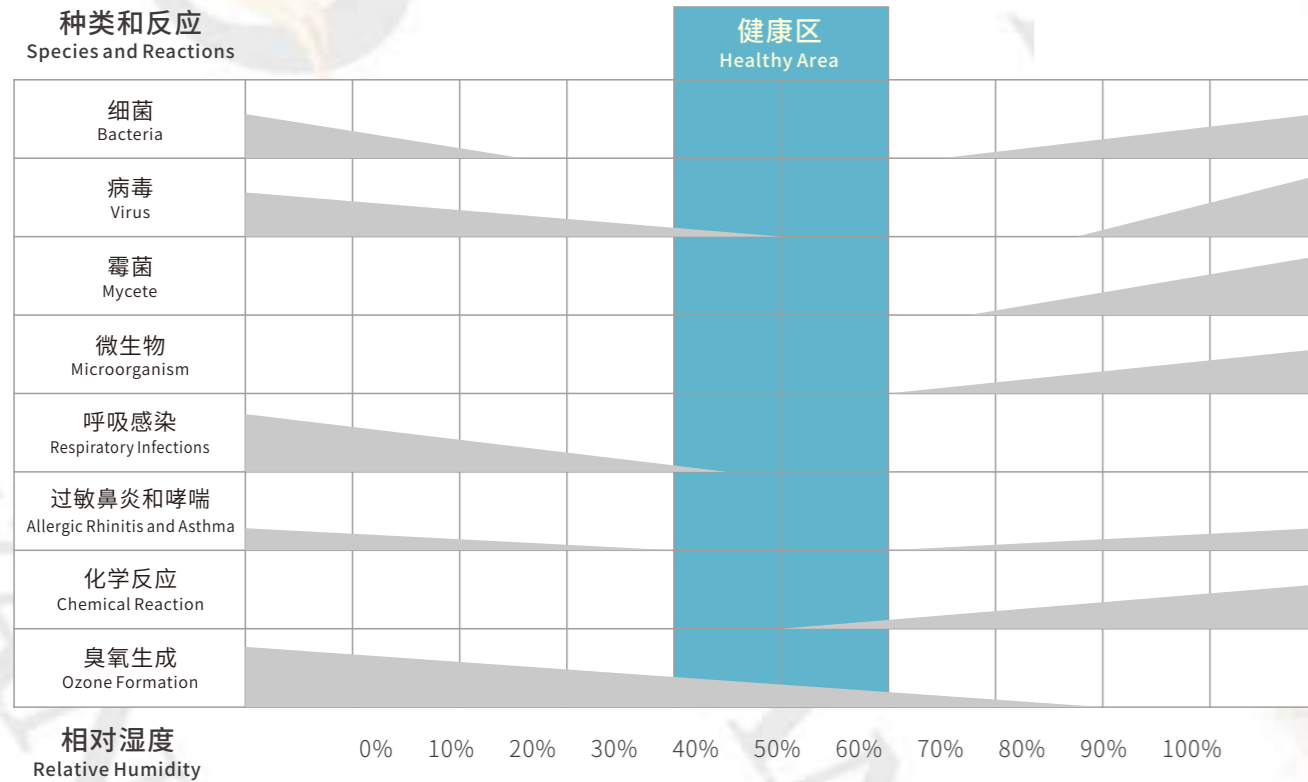




## Healthy Living Index Of Vanjoin Light Weight Energy-saving Panel

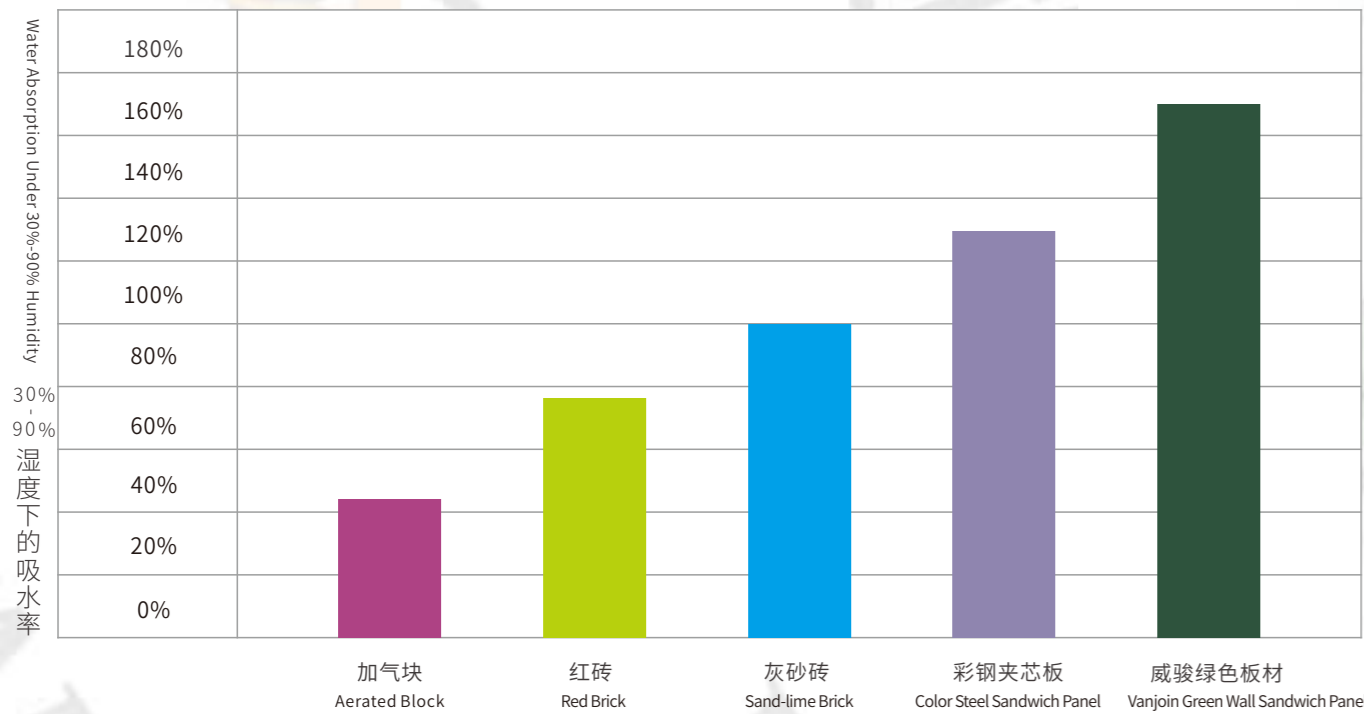
威骏绿色板材生活健康指数

人体健康最佳湿度  
The Best Humidity for Human Health



### 各种建筑材料在4mx4mx2.4m的房间内的湿度调节性能比较

Comparison of Humidity Control Performance of Various Building Materials in a 4mx4mx2.4m Room.



**宜居** LIVABLE

威骏轻质节能板材建成的房屋具有最佳健康指数, 最优温湿度及舒适度, 更加宜居。

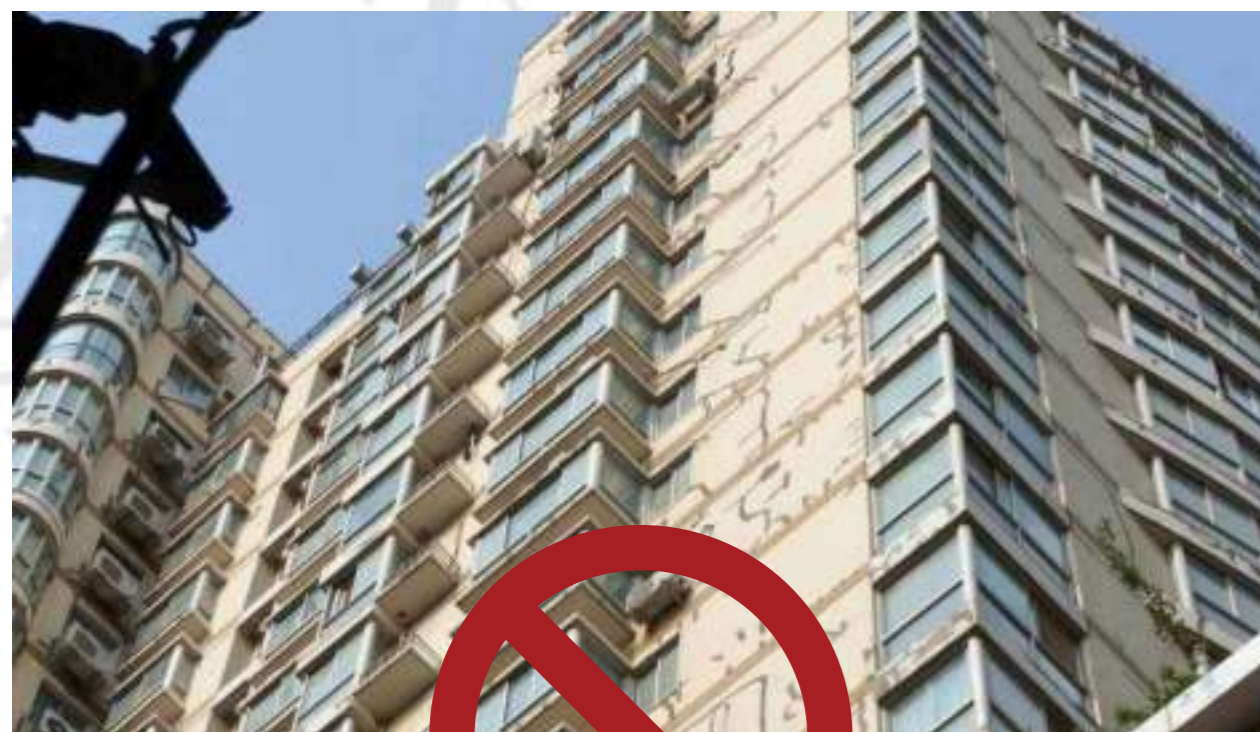
The house made by Vanjoin light weight panels has best health index, optimal temperature and humidity and comfort, more livable.





# QUALITY ASSURANCE COMMITMENT

质 保 承 诺



## Professional Wall Sandwich Panel Solution

There will be no cracking problem if you use Vanjoin special panel installation accessories and follow Vanjoin dedicated construction process. If this problem occurs, you can get replacement for free.

## 专业的墙体解决方案

使用威骏专用墙体施工辅料, 按照威骏专业施工流程, 拒绝墙体开裂。如出现此问题, 免费更换。

## Patented Products

High strength and no cracking;  
Surface boards no fall-off;  
If above problems occur,  
replace it for free.

## 专利产品

高强度不易断裂,  
面板不脱落,  
出现此问题免费更换。

If above mentioned quality problems occur under the condition that you strictly follow VANJOIN panels' storage, transport and installation method, we promise to replace for free.

在严格按照威骏轻质板材存放, 转运及安装条件下, 出现以上质量问题, 公司承诺免费更换。



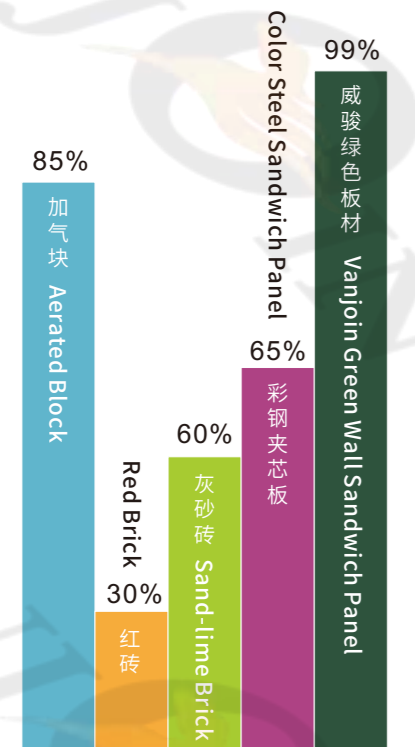


# VANJOIN LIGHTWEIGHT ENERGY-SAVING PANEL Vs. TRADITIONAL WALL MATERIALS

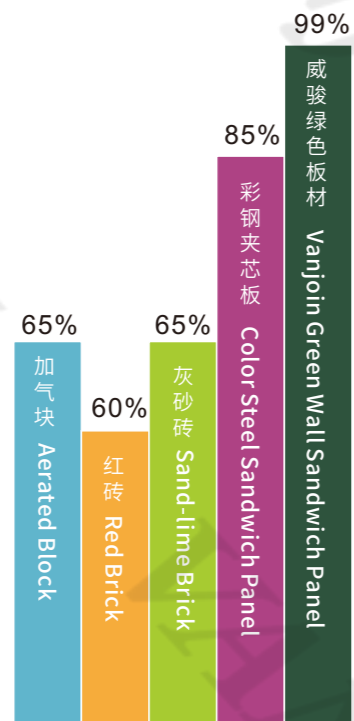
威骏轻质节能板材与传统墙体材料对比

■ Aerated Block 加气块  
■ Red Brick 红砖  
■ Sand-lime Brick 灰砂砖  
■ Color Steel Sandwich Panel 彩钢夹芯板  
■ Vanjoin Green Wall Sandwich Panel 威骏绿色板材

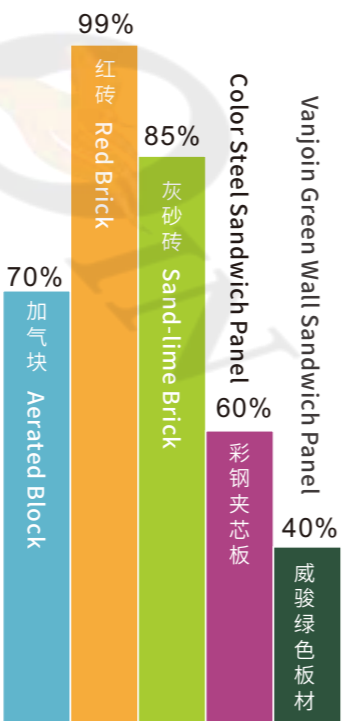
## Energy-saving and Eco-friendly 节能环保



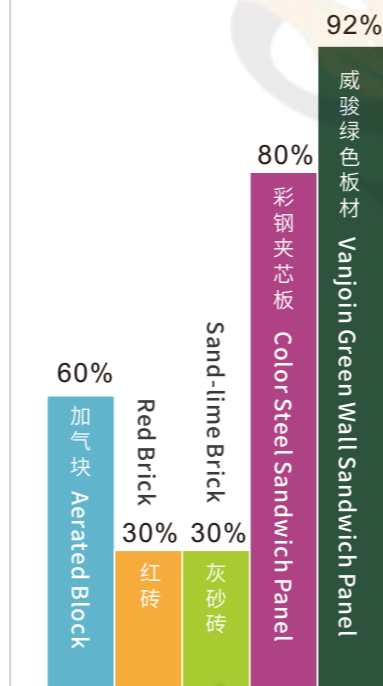
## Area Saving 节约空间



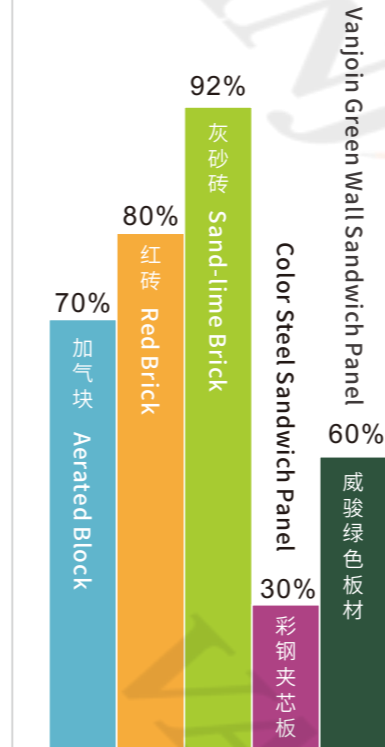
## Transportation Cost 运输成本



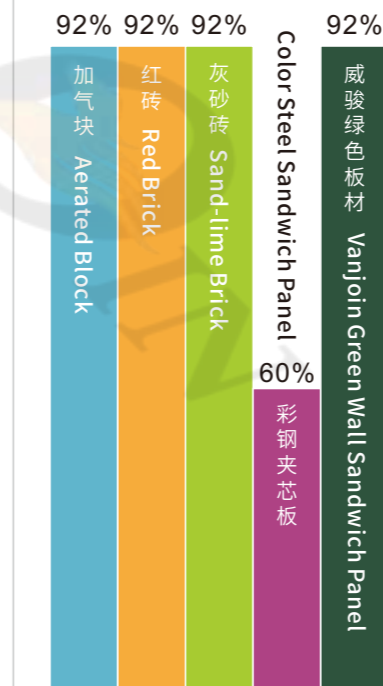
## Installation Speed 安装速度



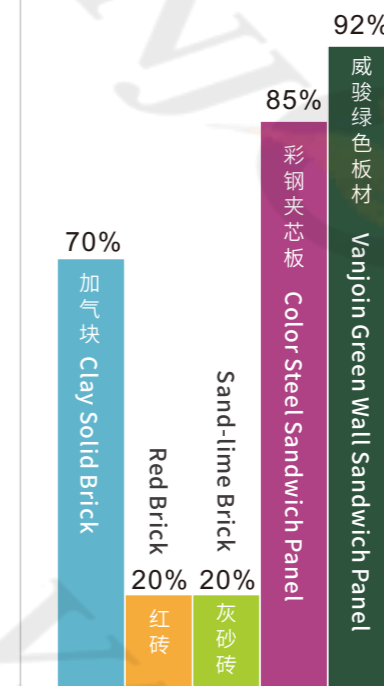
## Weight 重量



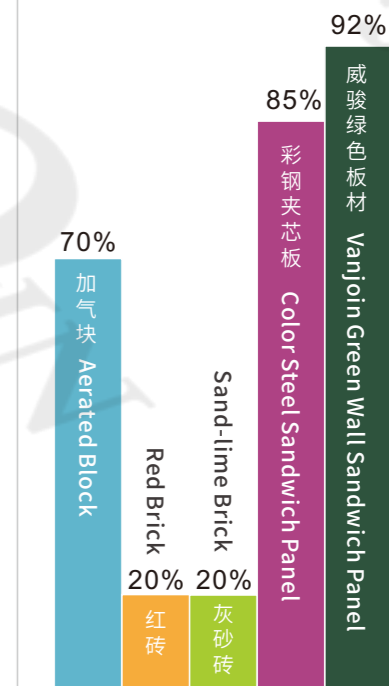
## Fireproof 防火



## Sound Insulation 隔音



## Heat Insulation 隔热



**50%**  
Lighter for VJ Panel  
威骏绿色板材更轻

**30%**  
More Stronger for VJ Panel  
威骏绿色板材更强

**10%**  
More Safer for VJ Panel  
威骏绿色板材更安全



# SCOPE OF APPLICATION

适用范围



## Interior Partition System 内隔墙应用系统

威骏轻质节能板以其优质防火,吊挂力,隔音,隔热,防水,易安装等性能,被广泛应用于高层及超高层建筑的隔墙等特殊位置。

With excellent fireproof, best hanging force, sound insulation, heat insulation, waterproof, easy installation etc., Vanjoin light weight compound sandwich panel have been widely applied to the special positions like partition panel of high-rise and mega-high-rise buildings.



## Exterior Wall & Villa System 外墙、别墅应用系统

威骏轻质节能板随季节气候的变化而自动调节室内空气水分含量的能力,使温度保持在一个恒温水平的生态效果,符合现代住宅建筑发展潮流。广泛应用于各种组合房屋,低层建筑物,复合公寓,别墅及城市住宅。

Vanjoin light weight compound sandwich panel can automatically adjust indoor air and water content with season and climate changes, which can keep the temperature level, and such ecology effect just goes with the tide of modern residential building. It is widely applied to various modular house, low buildings, apartment, villas, and city house, etc.



## Floor System 地板应用系统

威骏轻质节能板可创新应用于地板。该系统除具有隔音,防水,防潮等基本优越性能外,还具有高承重,抗静电,耐摩擦,高强度,便于电线槽埋设,耐腐蚀,不变形,不开裂等突出优点,非常适合于加建层楼板,工厂,车间,仓库等领域。

Vanjoin light weight compound sandwich panel can be innovatively used as floor board. Besides the basic characteristics like sound insulation, waterproof, dampproof, this system has the outstanding advantages such as high load-bearing capacity, anti-static electricity, friction resistance, high strength, convenient for wire groove and water pipe inbuilt, corrosion resistance, no deformation, no cracking etc., which is much suitable for the fields including the floor board of additional top floor, factory, workshop, warehouse, etc.

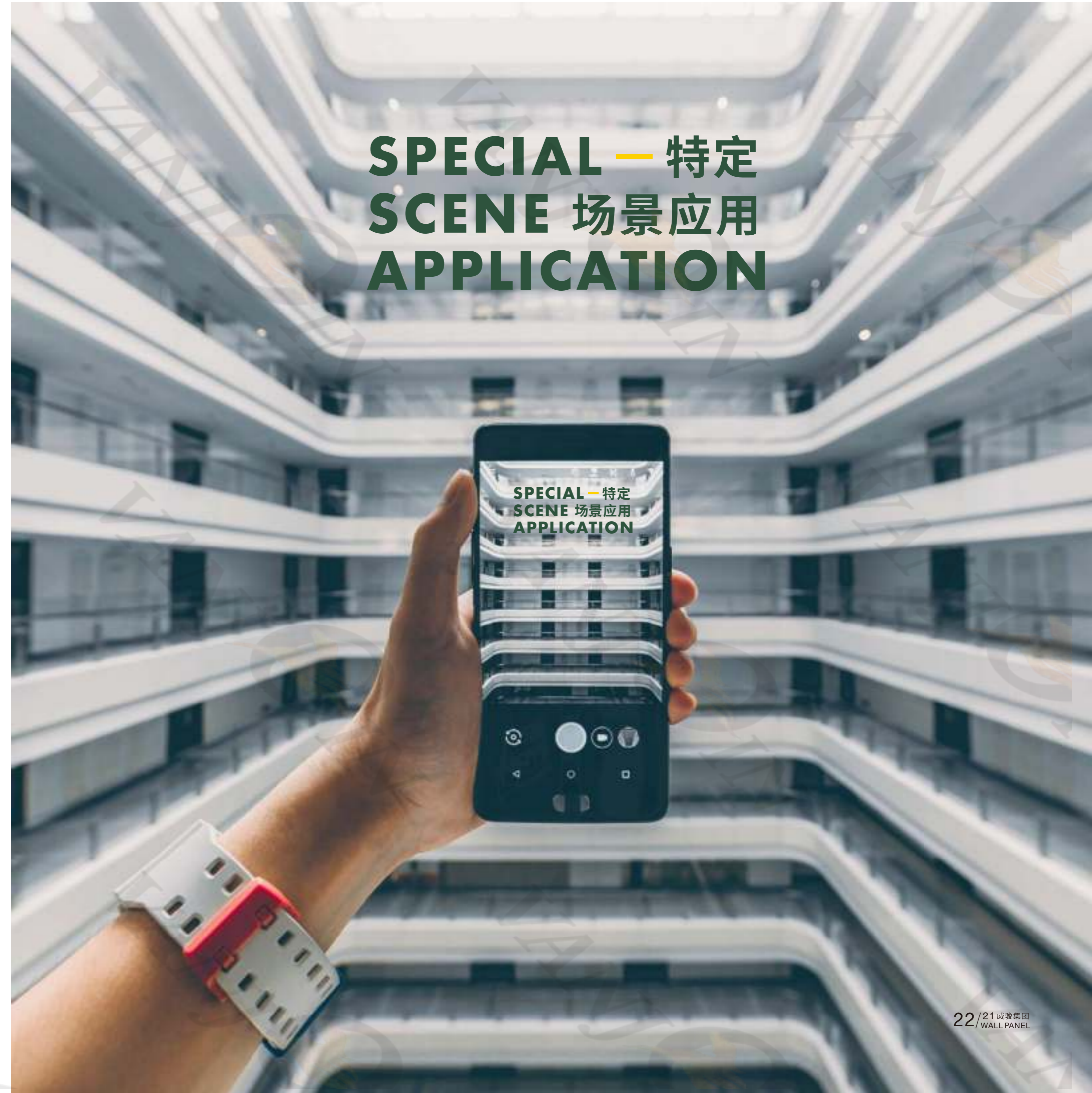


## Roof System 屋顶应用系统

威骏轻质节能板屋面应用系统为传统屋面建设带来全新的附加值和应用理念。该系统不仅解决屋顶渗透问题,同时具有隔热保温,连接面平整,耐高温等优点。其轻质高强特性减少了屋顶梁柱的应用,降低耗材,增加了安全性;其建议的施工和安装流程,大幅缩短施工期,综合性价比高。

Vanjoin light weight compound sandwich panel roof system brings brand-new added value and application idea to the traditional roof construction. This system not only solves the problem of roof leakage, but also has the advantages such as heat insulation, neat joint surface, high temperature resistance, etc. The features of light weight and high strength reduce the use of roof beam-column, reduce the construction of materials, improve security; its easy construction and installation procedures greatly shorten the construction time, which bring out its high integrated performance-price ratio.

# SPECIAL — 特定 SCENE 场景应用 APPLICATION





# 高层公寓

HIGH-RISE APARTMENT

## High-rise Apartment 高层公寓

家是我们栖息的港湾,在充满钢筋水泥的拥挤城市里,我们需要一个宁静宽敞舒适的灵魂归宿,威骏轻质节能板材较传统材料可节约5%空间,不仅具备居住最优的温度及湿度指数,同时兼具隔音、防火等优势;

Home is our habitat harbor. In a crowded city full of steel and cement, we need a quiet, spacious and comfortable soul home. Vanjoin light weight and energy-saving panels can save 5% space than traditional materials and it has not only the optimal temperature and humidity index for living, but also has the advantages of sound insulation, fireproof and so on.









# 高端 酒店

HIGH-END HOTEL



## High-end Hotel 高端酒店

现代社会人们出行以商务为主，节奏较快，晚上需要较好的休息环境才能应对白天商务应酬及谈判的纷杂压力，威骏板材现场测试隔音可达50-60dB，现场防火测试安全时间达4个小时以上，同时威骏轻质节能板材可植入负离子空气净化及安神助眠纳米微球，让您在品尝淳淳的红酒之后，在洁净的空气及轻柔的音乐中安然入睡；

In modern society, people travel mainly for business, and the rhythm is relatively fast. In order to cope with the various pressures of business engagements and negotiations during the day, people need a better rest environment at night. After on-site testing, Vanjoin light weight and energy-saving panel has the sound insulation ability up to 50-60dB, and fire resistance over 4hours. Meanwhile, Vanjoin panels can be implanted with anion air purification and sleep assistance soothing nanospheres, so that you can have a nice sleep in clean air and soft music after drinking a glass of full-bodied red wine.











# 学校

SCHOOL

## School 学校

教育是发展的基础，教育未来的希望，没有任何一个国家不重视教育，学生学习空间的安全性尤其受到关注，威骏轻质节能板材安装成型后呈现整体网状墙体结构，可抵抗8级地震及13级风速，即使在相对极端的自然灾害情况下保障学生的安全；

Education is the foundation of development and the hope of future. No country does not attach importance to education, the safety of students learning space is especially concerned. Using Vanjoin light weight energy-saving panel can form a mesh wall structure, which can resist the level 8 earthquake and the grade 13 wind speed, it can guarantee the safety of students even under a situation of relatively extreme natural disaster.









# HOSPITAL 医院

## Hospital 医院

医院人流众多, 各类疾病交叉感染机率非常高, 威骏节能板材在保证公共拥挤空间墙体安全及防火安全的情况下, 可植入抗菌防霉功能性纳米微粒, 一定程度上避免常规病菌的交叉感染;

There are crowded people in hospital, so the chance to get the cross-infection of various diseases is big. In order to avoid the cross-infection of conventional bacteria to a certain extent, Vanjoin energy-saving panel can be implanted with antibacterial and mildew-proof functional nanoparticles under the condition of ensuring the wall safety and fire-resistance safety in crowded public space.









# 联排别墅

TOWNHOUSE



## Townhouse 联排别墅

在自然灾害发生后需要快速重建时,在经济发展情况下解决民生经济房时,我们需要快速、安全、经济、持久的住房解决方案,使用威骏轻质节能板材建造150平方的房屋,四个工人可三天内完成主体结构,7天内完成装饰工程,在房屋数量多的情况下,工人可以实现流水线作业,体现更高的作业效率;

When there is a need for rapid reconstruction and solving economic housing problem under the condition of economy development, we need a rapid, safe, economic and durable housing solution. Using VJ lightweight energy-saving panels to build 150 square meters of house, 4 workers can complete the main structure within 3 days and the decoration work can be finished within 7 days. If there are a large quantity of houses to build, workers can work by streamlined operations to achieve better operational efficiency.











工业

INDUSTRIAL PLANT

厂房

### Industrial Plant and Staff Dormitory 工业厂房及员工宿舍

传统的厂房及宿舍以彩钢板搭建为主，存在隔热隔音差、防火安全低、外观不美观、易漏水锈蚀、使用寿命短等显著缺点，以威骏轻质节能板材搭建的厂房及宿舍可达50年以上使用寿命，隔热隔音优良，同时具有精致美丽的表现及高级别的防火能力。

The traditional industrial plant and staff dormitory are mainly built with colored steel panels, which have obvious shortcomings such as poor heat insulation and sound insulation, low safety of fire-resistance, unattractive appearance, easy leakage and corrosion, short service life, etc. By using Vanjoin light weight and energy-saving panels, the service life of factory building and dormitory can last more than 50years; and they'll hold the advantages of excellent insulation and sound insulation, exquisite and beautiful appearance and high fire resistance.







# PRODUCT STORAGE

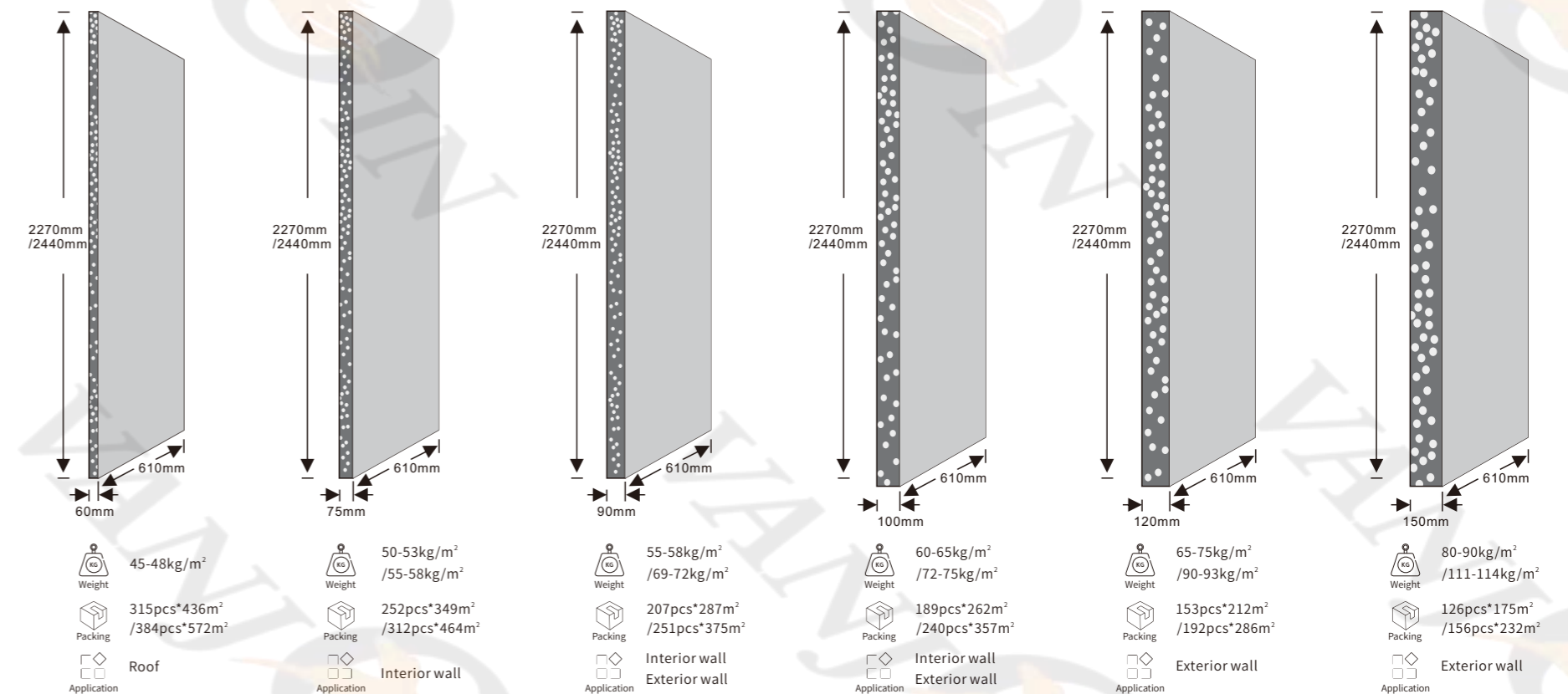
产 品 储 存

Vanjoin Light Weight Compound Sandwich Panel Packing Process-Every details, we show you in excellence.  
威骏板材包装过程每一处细节我们都精益求精为您呈现



# VJ LIGHT WEIGHT COMPOUND SANDWICH PANEL DIMENSION

VJ节能板材尺寸示意图



产品名称 Name	规格 (mm) Specification (mm)	重量 (kg/m <sup>2</sup> ) Weight (kg/m <sup>2</sup> )	Packing (pcs*m <sup>2</sup> per 20'GP/40'GP)	Application
VJ LIGHT WEIGHT COMPOUND SANDWICH PANEL VJ轻质节能板材	2270/2440x610x60	45-48	315pcs*436m <sup>2</sup> / 384pcs*572m <sup>2</sup>	Roof
	2270/2440x610x75	50-53	252pcs*349m <sup>2</sup> / 312pcs*464m <sup>2</sup>	Interior wall
	2270/2440x610x90	55-58	207pcs*287m <sup>2</sup> / 251pcs*375m <sup>2</sup>	Interior/Exterior wall
	2270/2440x610x100	60-65	189pcs*262m <sup>2</sup> / 240pcs*357m <sup>2</sup>	Interior/Exterior wall
	2270/2440x610x120	65-75	153pcs*212m <sup>2</sup> / 192pcs*286m <sup>2</sup>	Exterior wall
	2270/2440x610x150	80-90	126pcs*175m <sup>2</sup> / 156pcs*232m <sup>2</sup>	Exterior wall

Notes: for 2270mm panels, we use 20'GP container; for 2440mm panels, we use 40'HQ container.



# PROFESSIONAL SERVICES

专业服务



## 服务理念 SERVICE PHILOSOPHY

您的满意是我们的唯一使命  
Your satisfaction is our only mission.



## 服务承诺 SERVICE COMMITMENTS

24小时金牌售后服务，  
解决任何技术及质量相关问题  
(24小时售后服务电话: +86 136 5729 0777)

24-hour golden service, help you solve all the technical  
and quality problems.  
(24 hours after-sales service Telephone: +86 136 5729 0777)



## 专业设计 PROFESSIONAL DESIGN

专业设计团队为您提供外墙、室内、展厅、厂房等  
多种设计方案

Professional design team provide you various designs for  
external walls, indoor, exhibition hall, and plant, etc.



## 施工指导 CONSTRUCTION GUIDANCE

专业人员第一时间上门指导施工，  
同时提供完整施工视频

Professional engineers will provide on-site construction  
guidance at soonest possible, and also provide a  
complete construction video.

# VANJOIN PANEL INSTALLATION TOOLS

威骏节能板材安装工具



Hammer  
锤子



Electrical Cutter  
切割机



Measuring Tape  
卷尺



Level Instrument  
水平放线仪



Electrical Hammer  
电锤



Trowel  
泥刀



Level Ruler  
水平尺



Panel Lifting  
Machine  
板材提升机

# VANJOIN PANEL INSTALLATION ACCESSORIES

威骏节能板材安装辅料



## Fiberglass Mesh

Usage: Mainly used for interior wall and  
exterior wall's anti-cracking and thermal  
insulation, usually used along with anti-crack  
mortar for whole wall system.

Size: 1m (width) \*95m(length)per a roll



## Steel Bar

Usage: tapping  
into the wall  
panels to fix the  
wall panels.

Size: dia.6mm;  
length 20cm



## Cement Mortar

Usage: joint the wall  
panels, used between  
tongue and groove  
channels.  
Weight: 40kgs/bag



## Anti-Crack Mortar

Usage: the level coating  
for the exterior wall or  
anti-crack solution for  
the exterior wall.  
Weight: 40kgs/bag



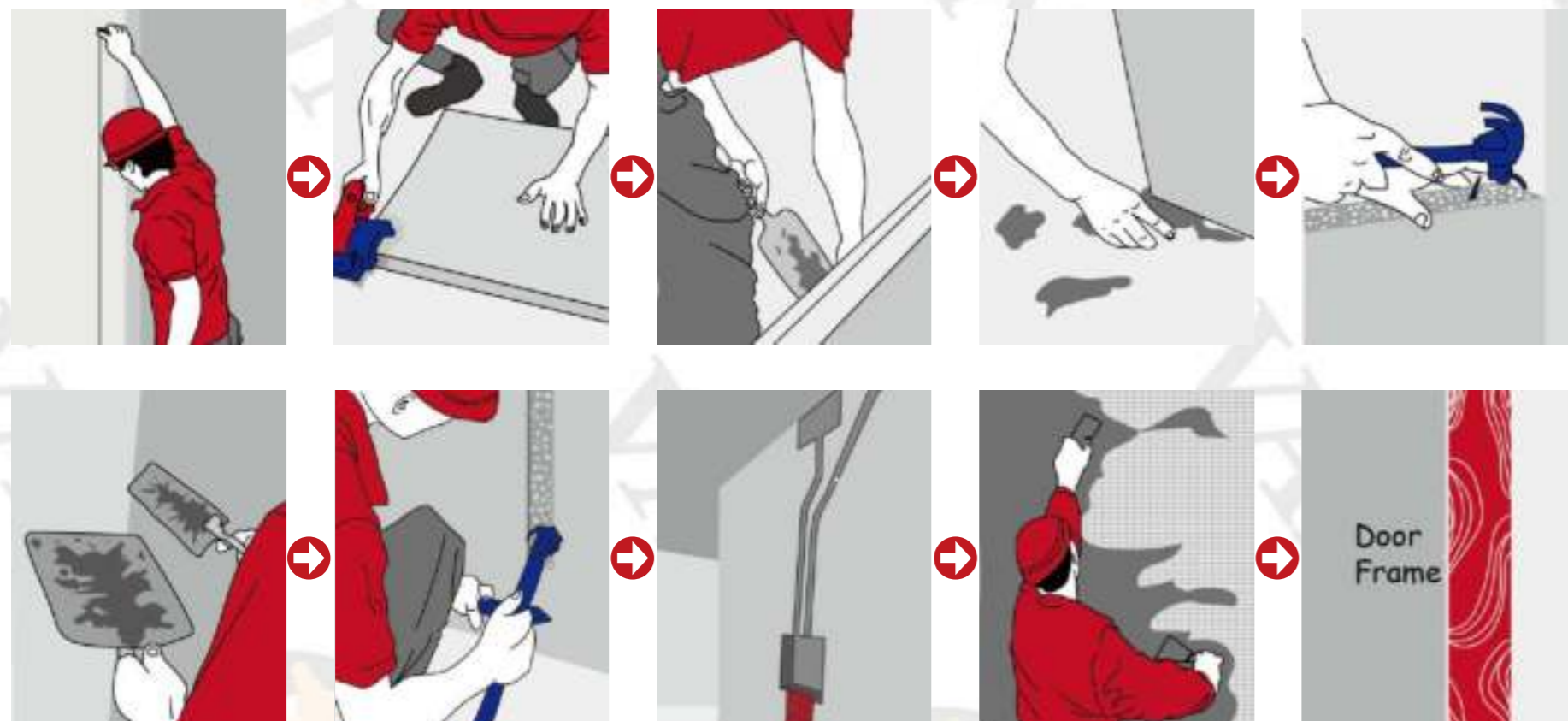
## Skim Coat

Usage: used for filling  
and leveling up to make  
the surface of the wall  
smoothly  
Weight: 20kgs/bag



# VANJOIN PANEL INSTALLATION FLOW

威骏节能板材安装流程



注：1-6为板材安装内容，7-12为其他单位后续施工内容。威骏公司全权负责1-6项安装内容。  
Notes: 1-6 is about panel installation, 7-12 is about follow-up construction of other projects. Vanjoin is solely responsible for 1-6 installation content.

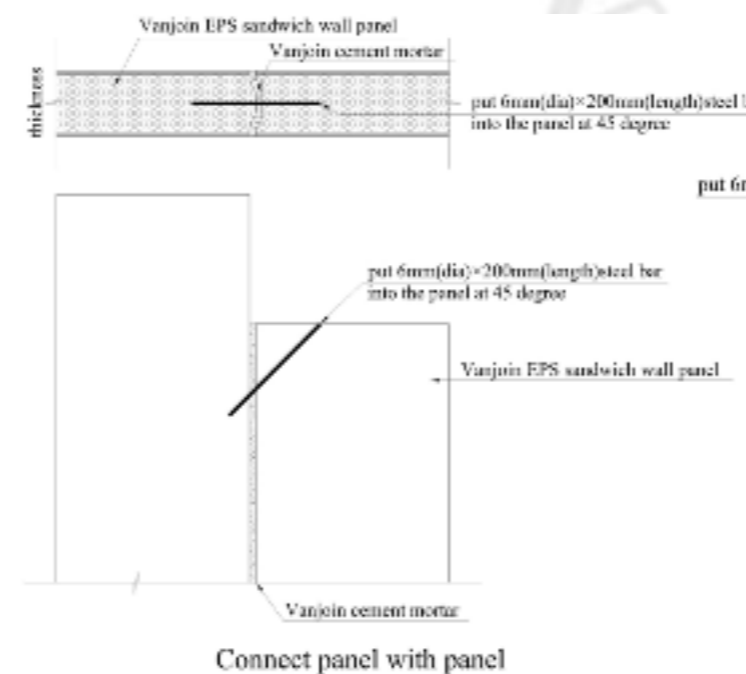
1. 放线、运板就位 在安装墙板的轴线分别上下弹出板厚的双线，根据需要的规格轻松抬到墙边。  
1. Setting the line and carrying the board in position: Eject double lines of board thickness up and down the axes of installed wall board, easily carry to the side of wall according to the specification needed.
2. 锯板 根据墙体的规格任意用手提电锯切割。  
2. Sawing board: Using hand-hold electric saw to cut freely according to the wall specification.
3. 上浆 先在两块板的榫边水一泥，再将聚合物砂浆任意抹在一块榫边上。  
3. Sizing: Sizing cement on tenon side of two boards, then spread polymer mortar on one tenon side casually.
4. 安装 将准备安装的条板搬到拼装位置，用铁撬将墙板校正，用力撬紧，使聚合物砂浆从接缝挤出至饱满，再用木楔将其临时固定。  
4. Installation: Carrying the board prepared to be installed to the installation place, correcting the wall board by gavelock and making it close tightly, and let the polymer mortar squeeze out into full and fixing it with a chock temporarily.
5. 校正、固定 用2米或2米以上的靠尺检查垂直、平整校正，再用Φ6mm或Φ8mm带肋的钢筋加建筑胶固定。  
5. Correcting, fixing: Using a guiding rule of two meters or longer to check vertically and leveling correction, then using Φ6mm or Φ8mm reinforcing steel bar with ribs adding with construction sealant to fix.
6. 灌浆、补浆 将校正后的墙体墙缝用聚合物砂浆补满、刮平、上下间隙大的用细石混凝土填补。  
6. Grouting and filling starch: Filling and stricking the corrected wall board with polymer mortar, filling the big gap with pea gravel concrete.

7. 贴网格布 在灌缝聚合物及墙体全部定型后，在整个墙面（包括接缝处）用抗裂砂浆将玻纤挂网上。  
7. Sticking fiberglass mesh: After the polymer (for filling the gaps) and wall are all shaped, sticking fiberglass mesh on the whole wall with anti-crack mortar.
8. 安装电线、开关 将要设暗线、开关盒位置放线，再用手提电锯切割开槽，安装完毕后用聚合物砂浆补平。  
8. Installing electrical wires and switches: Setting lines on the places needing to be set with concealed wire and switch box, then cut a groove by hand-hold electric saw, filling with polymer mortar after installation.
9. 装门框 在安装好的墙上预留门窗洞口，随意用夹板或线条描画。  
9. Installing doorcase: Preparing door and window holes on the installed wall, anchoring by splint or lines.
10. 面饰涂料、墙纸 在装好的墙体上，不需抹灰，直接刮腻子，再刷涂料或贴墙纸。  
10. Facing coating and wall papers: Scraping putty directly without plastering on the installed wall, then brushing coating and sticking wall paper.
11. 饰面瓷砖、装饰板 在装好的墙体上不需抹灰则可随意粘贴瓷砖或其他木饰面板。  
11. Facing ceramic tile, decorative sheet: Sticking ceramic tiles or other wood facing panels casually without plastering on installed wall.
12. 电器安装 在装好的室内随意安装灯具、家具、空调、可钉可挂。  
12. Electric apparatus installation: Install lights, furniture, air-conditioners casually on installed room, can be nailed or hanged.

# PANEL INSTALLATION NODE DIAGRAM

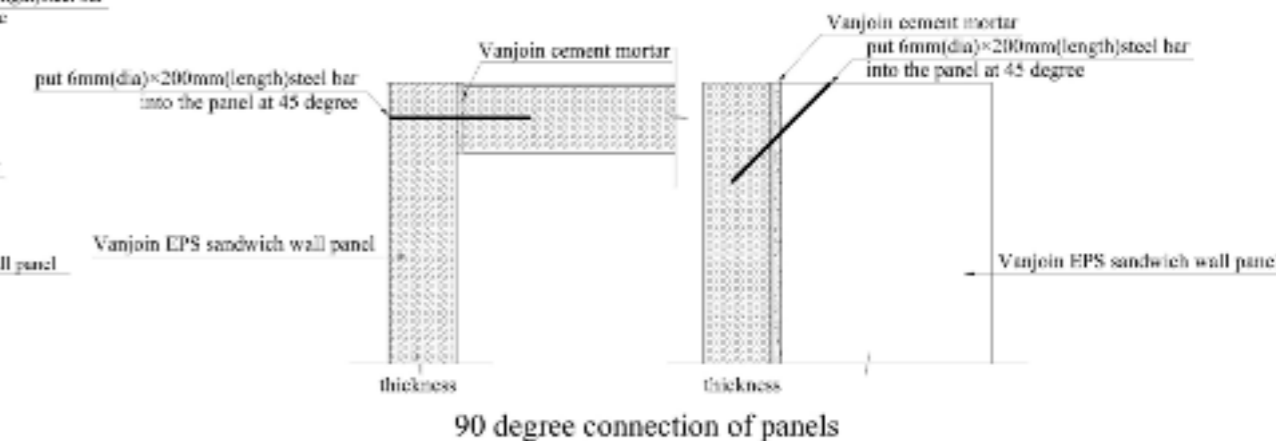
安装节点图

## 1. Horizontal Connection



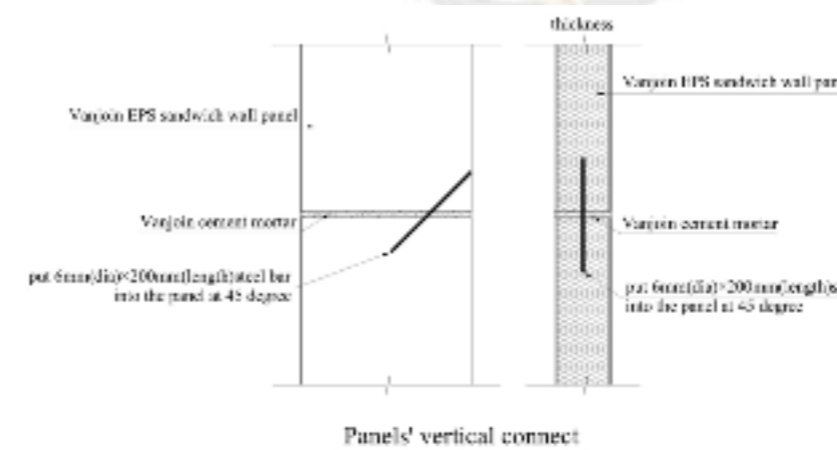
Connect panel with panel

## 2. 90 Degree Connection of Panels



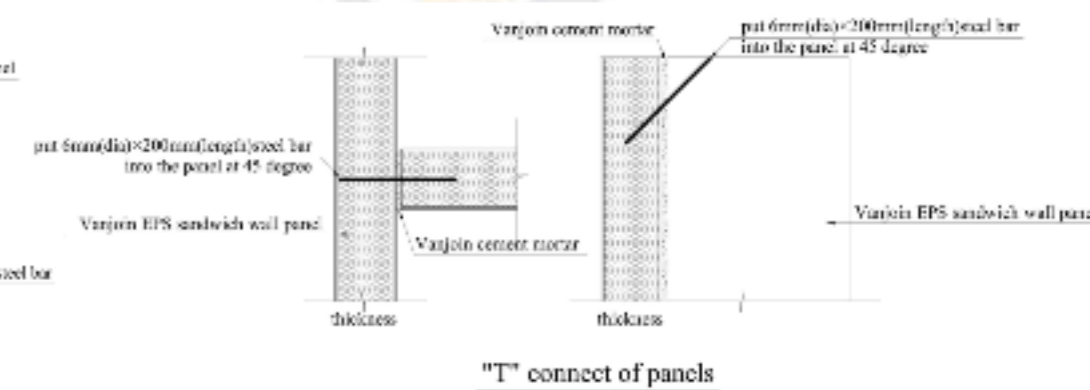
90 degree connection of panels

## 3. Vertical Connection



Panels' vertical connect

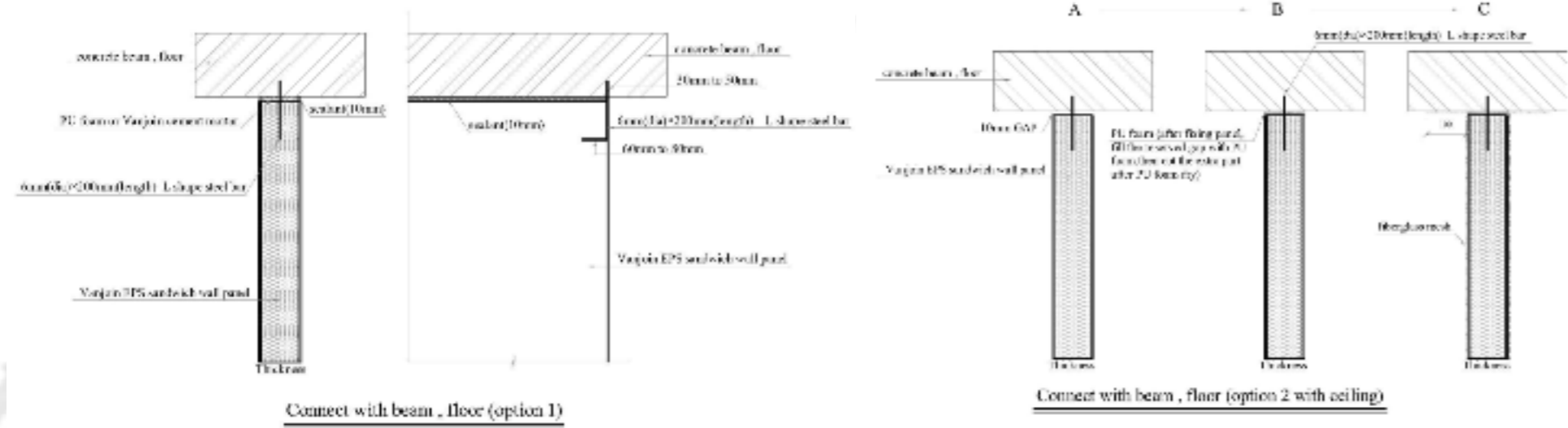
## 4. T-Connection of Panels



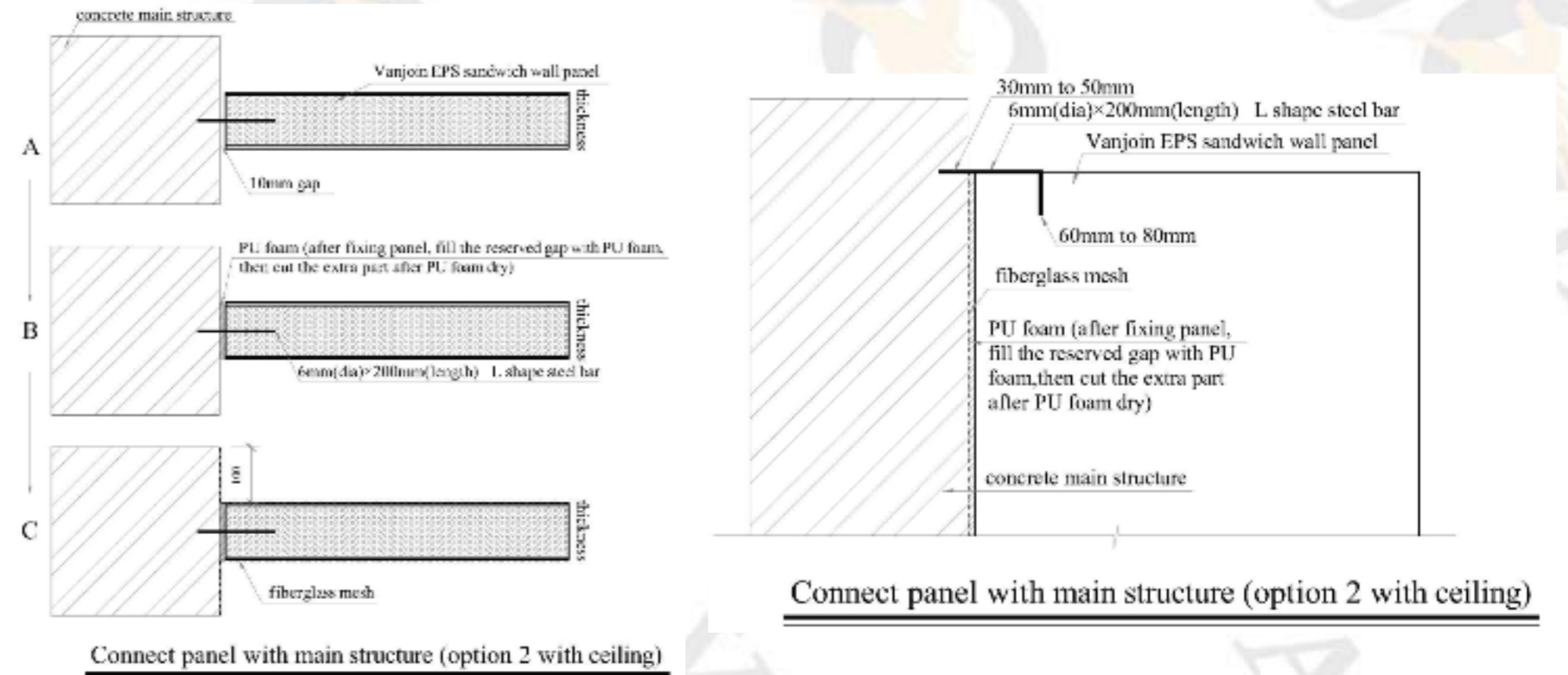
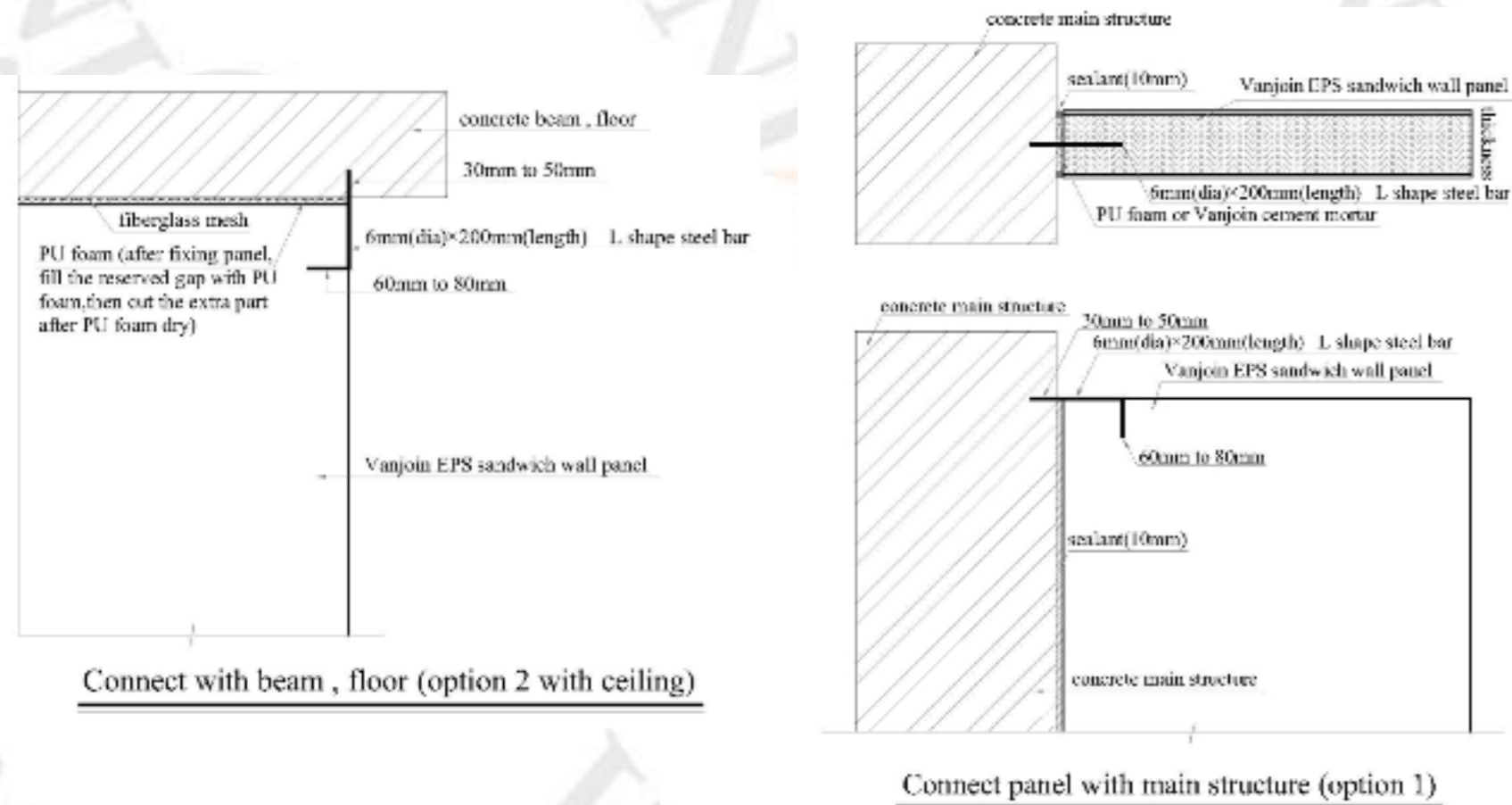
"T" connect of panels



## 5. Connection with Floor & Beam

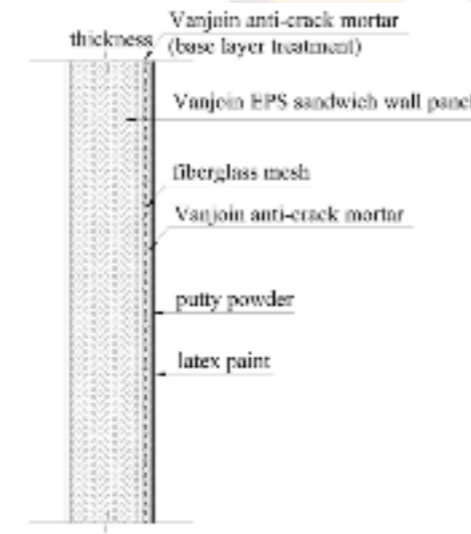


## 6. Connection with Structure(column)



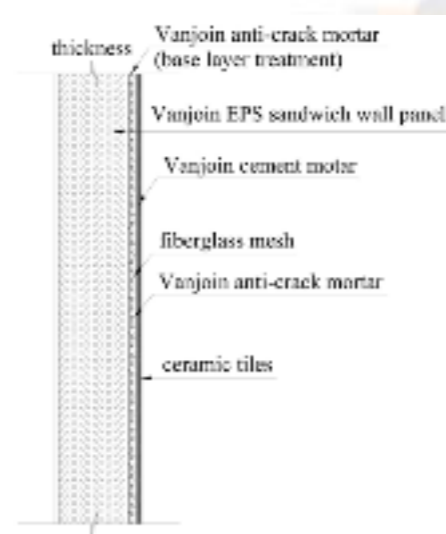
## Vanjoir Wall Panel Decoration Processing

### 1. Latex Paint



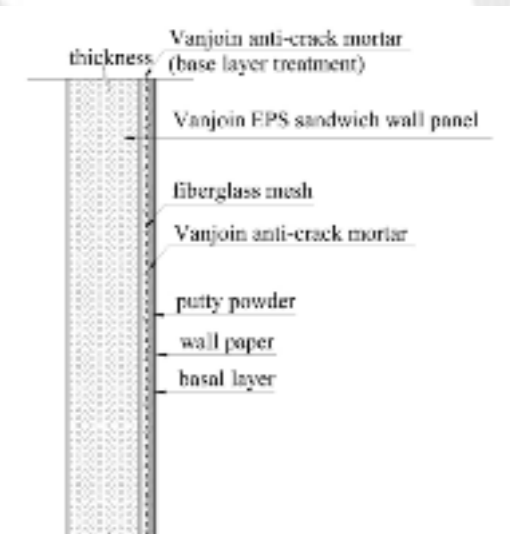
Wall decoration with latex paint

### 2. Ceramic Tiles



Wall decoration with ceramic tiles

### 3. Wall Paper

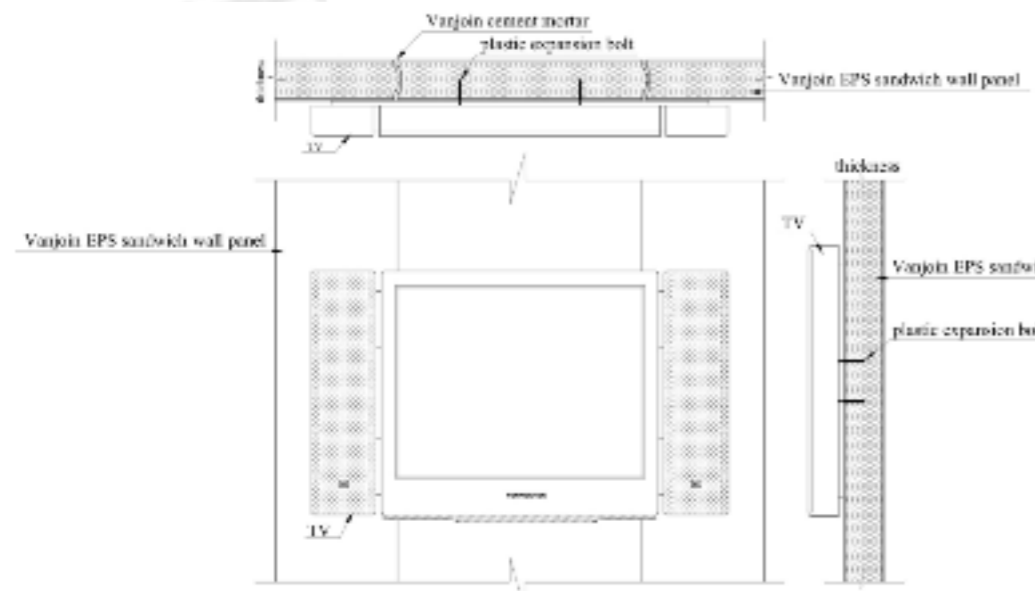


Wall decoration with wall paper



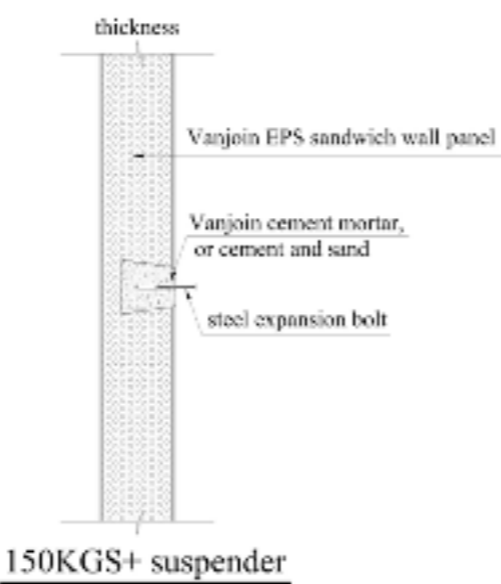
# Vanjoin Wall Panel Hanging Items Treatment

Suspension Within 100kg Goods

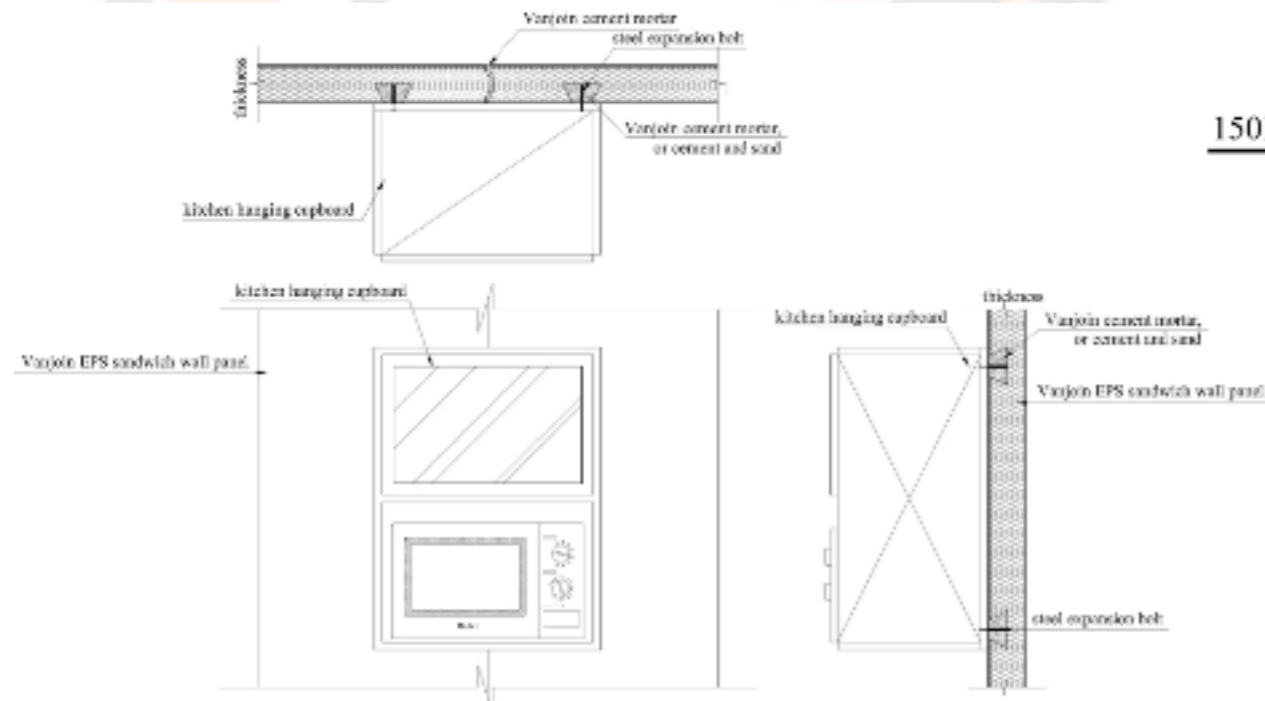


100KGS- Suspender (TV)

Node Diagram:



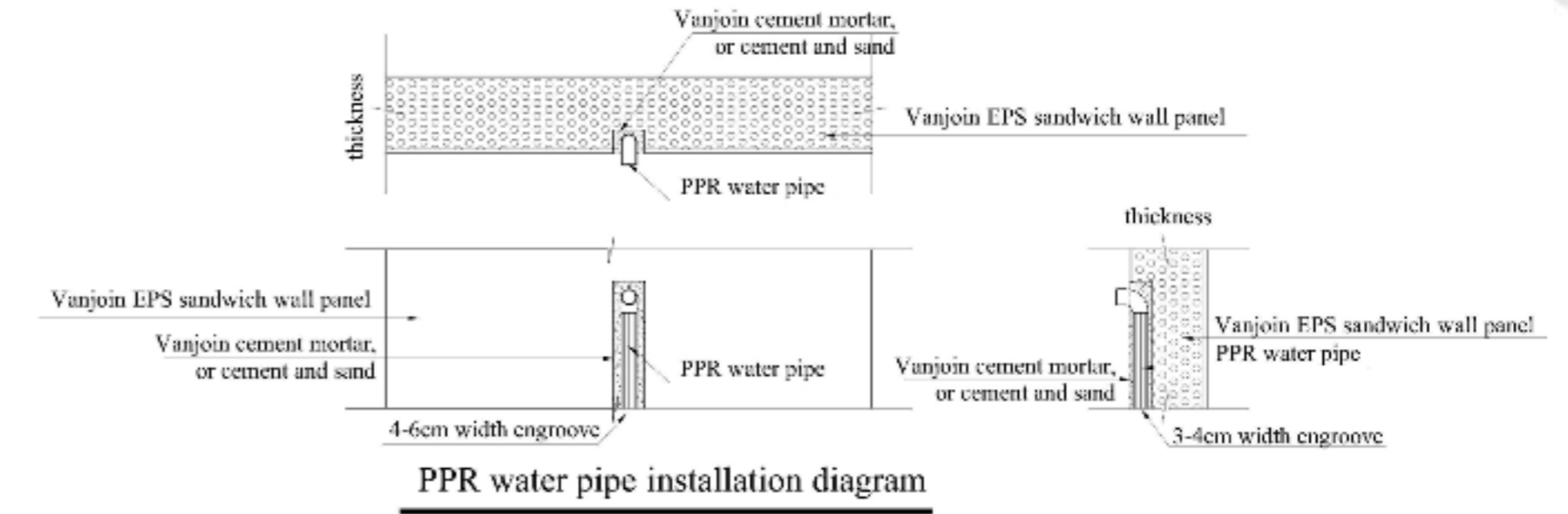
Suspenders More Than 150kg



150KGS+ Suspender (kitchen hanging cupboard)

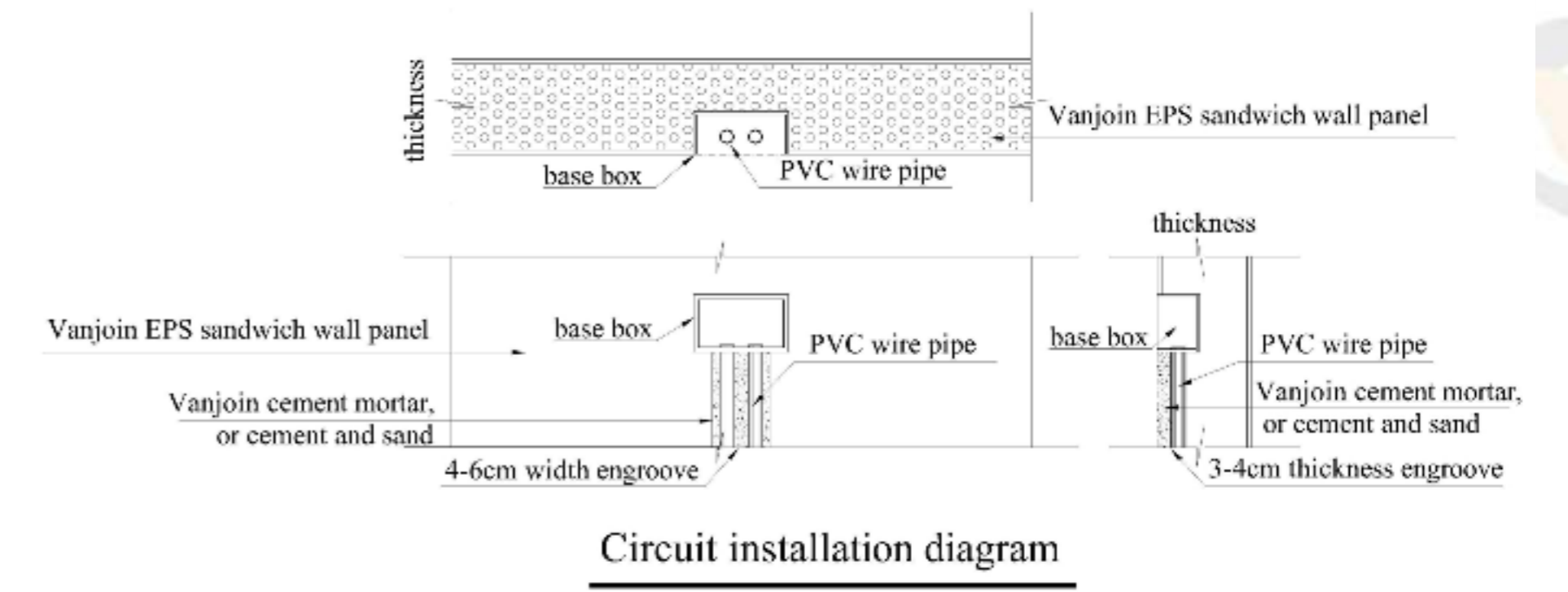
# Water Pipe & Circuit Engrooving On Wall Panel

Water Pipes:



PPR water pipe installation diagram

Circuit:



Circuit installation diagram



# VANJOIN BRAND NEW 威骏全新板材设备 EQUIPMENT OF SANDWICH PANEL

## Perseverance 专一

我们十四年来只做轻质节能板材生产线，潜心研究完善设备的每个细节及功能，目前已经发展为第六代产品线；

We do light weight sandwich panel production line for 14 years, and devote ourselves to every details and functions of the equipment. Now we have developed into the 6th Generation product line.

## Experience 经验

我们是最具轻质节能板材生产经验的设备生产商，四个生产基地年产量达600万平方米，我们时刻以生产优化及成本经济为原则来研究及生产板材生产设备；

We are the professional equipment manufacturer with richest experience in the production of light weight sandwich panel. We not only provide quality equipment, but also share with you all our panel production experience. The total annual output of our 4 production bases reaches 6 million square meters. We always take production optimization and cost-effectiveness as the principle to study and manufacture sandwich panel production equipment.

## Profession 专业

我们拥有专业的教授研究团队，与中国有实力的四所大学进行紧密合作，我们在轻质节能板材领域持续创新，持续保持该细分领域的专业领导地位，我们会结合客户当地材料及环境情况提供配方选择 and 最优成本生产方案，同时我们会给客户终生技术服务及新品持续免费推荐服务，与客户共同成长。

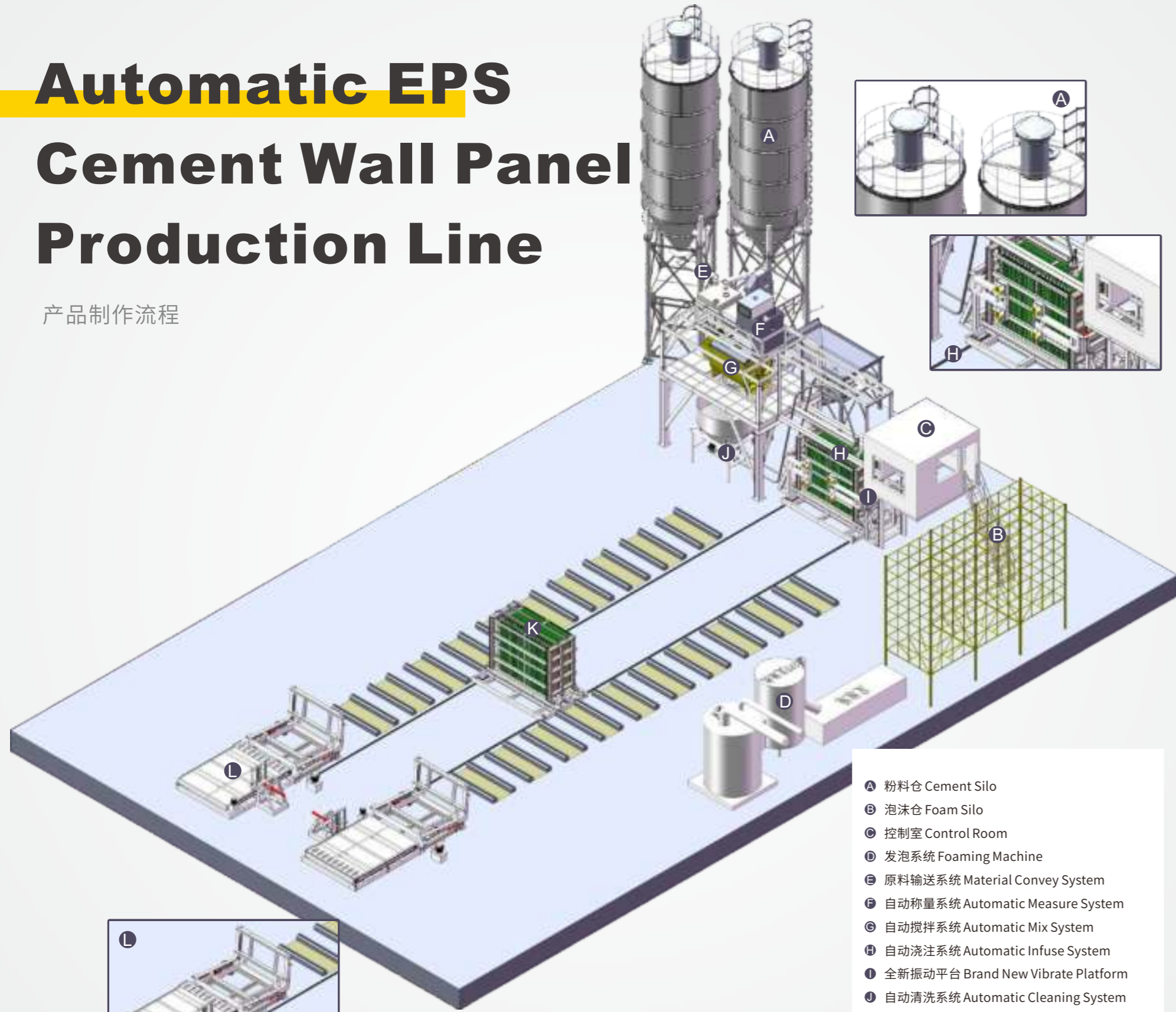
We have a professional team of professors and researchers working closely with four famous universities in China. We continue to innovate in the field of light weight sandwich panel and maintain our professional leadership in this subdivision. We will provide formulation selection and optimal cost production solutions according to our customers' local materials and environmental conditions. Meanwhile, we provide our customers with lifelong technical services and continuous free recommendation of new products. We grow together with our customers.



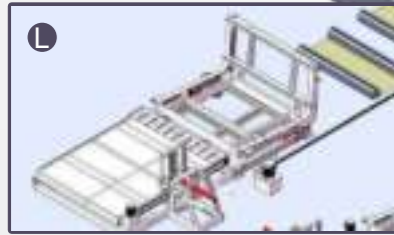


# Automatic EPS Cement Wall Panel Production Line

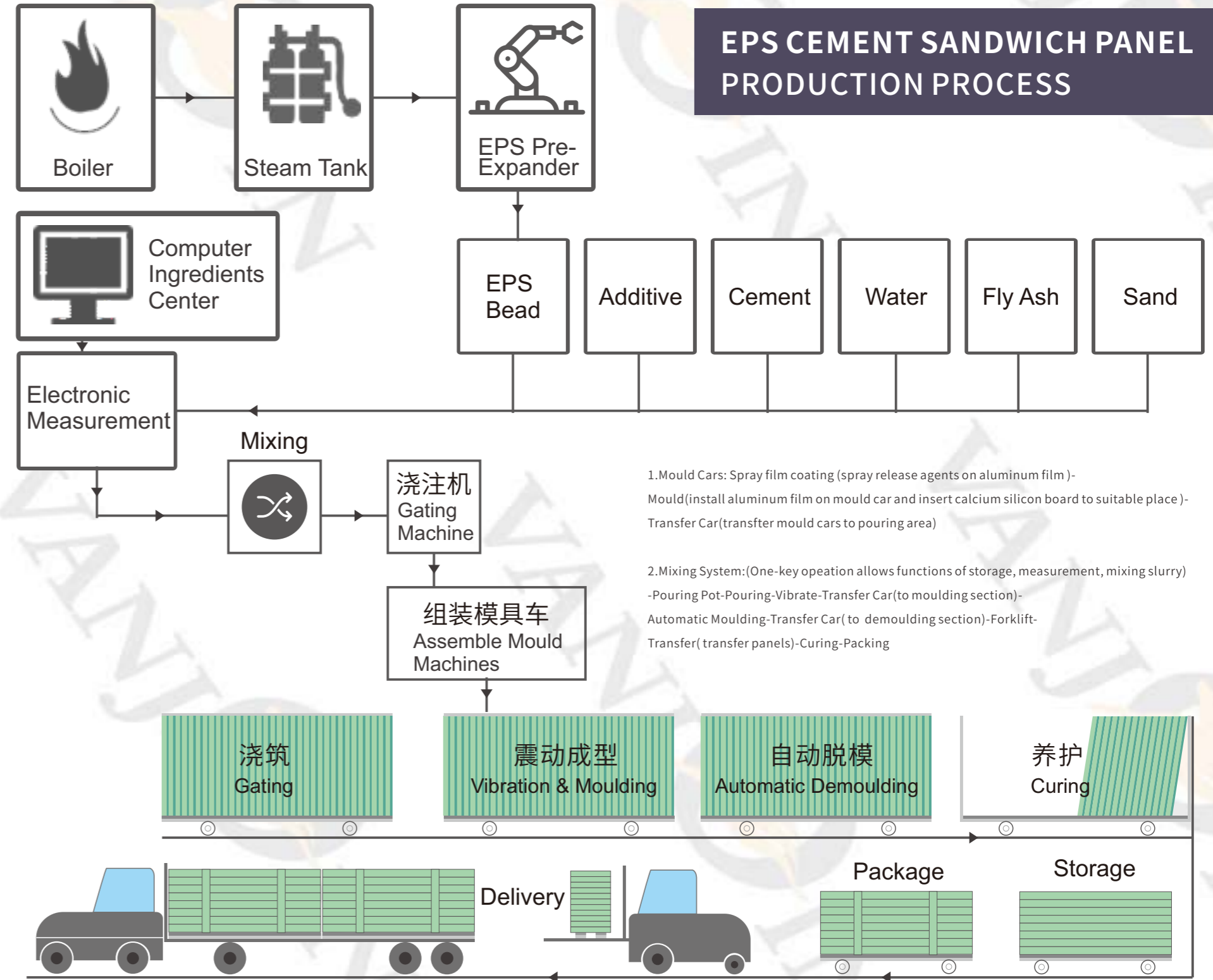
产品制作流程



- A 粉料仓 Cement Silo
- B 泡沫仓 Foam Silo
- C 控制室 Control Room
- D 发泡系统 Foaming Machine
- E 原料输送系统 Material Convey System
- F 自动称量系统 Automatic Measure System
- G 自动搅拌系统 Automatic Mix System
- H 自动浇注系统 Automatic Infuse System
- I 全新振动平台 Brand New Vibrate Platform
- J 自动清洗系统 Automatic Cleaning System
- K 模架循环系统 Moulding Circulation System
- L 自动脱模系统 Automatic Demoulding System



## EPS CEMENT SANDWICH PANEL PRODUCTION PROCESS



1. Mould Cars: Spray film coating (spray release agents on aluminum film) - Mould (install aluminum film on mould car and insert calcium silicon board to suitable place) - Transfer Car (transfer mould cars to pouring area)
2. Mixing System: (One-key operation allows functions of storage, measurement, mixing slurry) - Pouring Pot - Pouring - Vibrate - Transfer Car (to moulding section) - Automatic Moulding - Transfer Car (to demoulding section) - Forklift - Transfer (transfer panels) - Curing - Packing

1. 模架车: 喷涂涂膜剂 (将脱模剂喷涂在铝膜上) → 装模 (将铝膜在模架车上安装好, 将硅钙板插入对应位置) → 转移车 (将模架车转移到浇筑区)
2. 搅拌 (一键式操作实现全自动上料、计量、搅拌成浆料) → 浇筑罐  
浇筑 → 震动 → 转移车 (将模架车转移到成型区) → 成型 → 转移车 (将模架车转移到脱模区) → 自动脱模 (通过脱模机自动脱模) → 叉车转运 (转运板材) → 堆场养护 → 包装



# FOAMING MACHINE

发泡系统



Electric Boiler



## 锅炉 Boiler

该设备主要为发泡设备提供蒸汽用来发泡EPS泡沫, 我司采用电加热锅炉, 该锅炉利用电能加热给水以获得规定参数的蒸汽或热水, 锅炉的热效率高于98%。锅炉以电为热源, 现场清洁无污染。

The equipment is mainly used for supplying steam for the foaming equipment to foam EPS foam. We used electric heating boiler, which is heating water by electric energy to obtain the specified parameters of steam or hot water. The boiler's thermal efficiency is higher than 98%. Electricity is used for the boiler to heat, clean and pollution-free at site.

## 技术参数 Technical Parameters

Item	Unit	PSF-Q1400JR
Diameter	mm	1400
Shell height	mm	2000
Volume	m <sup>3</sup>	3
Useable volume	m <sup>3</sup>	2.8
Steam pressure	mpa	0.6-0.8
Compressed air pressure	mpa	0.6-0.8
Density	kg/m <sup>3</sup>	12-40
Throughput	kg/h	150-600
Connected load	kw	14.87
Overall dimension	mm	4500*2150*2950
Machine weight	kg	2500

## EPS发泡机 EPS Foaming Machine

- 1、该机器采用PLC和触摸屏控制, 自动进料, 电子称量, 温度控制, 料位控制以实现自动化生产。  
The machine adopts PLC and touch screen control, automatic filling, electronic weighing, temperature control, material level control to realize automatic production.
- 2、该设备包括螺旋输送机 and 电子计量系统。  
The machine is complete with Screw Conveyor and Electronic Weighing system.
- 3、封闭恒温发泡仓具有热效率高, 节省蒸汽等特点。  
The closed constant pressure foaming barrel features of high heating efficiency and saves steam.
- 4、高精度的指导减压阀控制温度和封闭仓的蒸汽压力, 确保阀门输出压力的连续性, 并将内部温度控制在±1%以内, 从而保证泡沫材料大小均衡, 避免了因温度控制不当引起的泡沫颗粒成团或结块。  
High precise guiding pressure reducing valve controls the temperature and steam pressure of the closed barrel, ensuring the outcome pressure of the valve constant and the inner temperature controlled within ±1%, which keeps the foamed material equal and prevents the bead agglomerate because of the bad temperature control.
- 5、用光电或者振动传感器来控制料位, 确保密度公差在±3%以内。  
With photoelectric or vibration sensor to control material level, ensuring density tolerance within ±3%.
- 6、该机配置了流化床干燥机, 包含烘干, 自动筛选和传送物流进储料仓。  
The machine is equipped with fluidized bed dryer, including drying, automatic sieving, depluming and material conveying to silos.
- 7、大多数组件是世界著名品牌, 性能可靠, 质量稳定, 使用寿命长, 维护成本低。  
Most components are of world-famous brands, with reliable performance, stable quality, long service life and low maintenance cost.
- 8、该机器可实现初级和2次发泡。  
The machine can realize the primary and second expansion.

# AUTOMATIC MIX SYSTEM

自动搅拌系统

## 结构及工作原理简介

### Structure & Working Principle

该搅拌站通过全自动控制系统可实现自动搅拌及出料、自动供给水泥、自动供砂、自动供水、泡沫塑料自动供给, 添加剂自动供给等功能。

This concrete mixing station, through full, automatic control system, can realize the functions like automatic mixing and discharging, automatic supply cement, sand, water, foam materials, and additives, etc.



**整机主架:** 采用型材焊接而成的两层楼设计。

Body frame: two-storey design by adopting section bars welded together.

**搅拌系统:** 采用2台JS750双卧轴强制式搅拌机, 分开出料。

**水泥自动供给系统:** 由两台60吨的水泥仓储存水泥水泥仓设有上下料位计, 自动除尘系统, 内外爬梯, 防爆阀门, 破拱等装置。水泥供给采用2台螺旋输送机, 2台水泥计量秤, 1台分料机及2台蝶阀等控制。

**Automatic Cement-Supply System:** Use 2 sets 60-ton cement storage to store cement, the cement storage has up-down level gauge, automatic dust removal system, inside and outside ladders, explosion-proof valve, arch breaker, and other devices. Cement supply is controlled by 2 sets screw conveyors, 2 sets cement batching devices, 1 set divider and 2 sets butterfly valves.

**自动供砂系统:** 砂的储存及计算采用5立方的配料斗完成, 提升采用一台斗提机及一台分料装置全封闭式向两台搅拌机分别供料, 向储料仓供料由用户自购铲车完成。

**Automatic Sand-Supply System:** The storage and measurement of sand are finished by 5m<sup>3</sup> batch hopper, Hoisting is realized by 1 set bucket elevator and 1 set sub-feeding device, totally-enclosed feeding to two mixers respectively. The feeding to two mixers respectively, the feeding for storage silo is finished by the user by purchasing forklifts.

**自动供水系统:** 由两台水泵分别向两个水计量装置供水, 水计量装置在达到设定值之后自动向搅拌机供水, 总量大小人工预先设定, 水池客户自建。

**Automatic Water-Supply System:** 2 sets water pumps supply water to two water measuring devices respectively; after reaching the set value, water measuring devices respectively; after reaching the set value, water measuring devices supply water to mixers automatically. The total volume is pre-programmed, and user need to build the water pool.

**泡沫材料自动供给系统:** 采用体积计量方式计量, 卸料通过程序设定自动完成。主体由1个5立方储料仓、1个1立方计量仓及两块卸料门组成。

**Automatic Foam material-Supply System:** calculate by volume measuring method, and discharge work is automatically finished by preset program. The body of this system is composed of one 5 m<sup>3</sup> storage silo, one 1 m<sup>3</sup> measuring silo and two discharge doors.

**添加剂自动供给系统:** 采用体积计量方式计量, 由2台1立方储料仓及两台2台流量控制阀门组成, 通过控制系统控制完成自动供料。

**Automatic Additives-Supply System:** calculate by volume measuring method, and this system is composed of 2 sets 1m<sup>3</sup> storage silos and 2 sets flow control valves, completing automatic material-supply by control system.

**自动控制系统:** 由高压控制柜, 低压控制柜, 显示屏, 工控机, 控制软件、电路、气路系统组成。可实现一键式操作完成整道工序控制。还可以根据客户要求增加监视系统。

**Automatic Control System:** composed of high-pressure control cabinet, low-voltage control cabinet, display screen, IPC, control software, circuits, air channel. One-key operation allows complete control of the whole procedure. Additional monitoring system can be added at customer's request.





# MOULDING MACHINE CIRCULATION SYSTEM AND AUTOMATIC DEMOULDING SYSTEM

模架循环系统及自动脱模系统

VJ-HT2270						
Name		Main Parameters				
Overall Dimensions (Length x Width x Height)		3180x1380x3480mm				
Weight		2800KG				
Mobile Power(KW)		2.2				
Mobile Speed(m/min)		≤60				
Main Components	Host		Chassis assembly(power device), former stands, after stands, after plate, rod			
	Accessories		Pressing Plate, side mould			
Production Information	Thickness (mm)	Width (mm)	Length (mm)	Quantity (pcs/set)	Area (m <sup>2</sup> /set)	Raw Material (m <sup>3</sup> )
	60	610	2270	60	83.0	4.15
	75	610	2270	50	69.2	4.50
	90	610	2270	42	58.1	4.65
	100	610	2270	40	55.3	4.98
	120	610	2270	34	47.0	5.17
Remarks	150	610	2270	28	38.7	5.42
	180	610	2270	22	30.4	5.77
Remarks		Two transition car, production line conversion use, One set cheer machine, spray release agent use, Pour table, track				

模具车高度可更具客户的要求进行设计。  
The height of the mould can be customized by customers specific requirements.



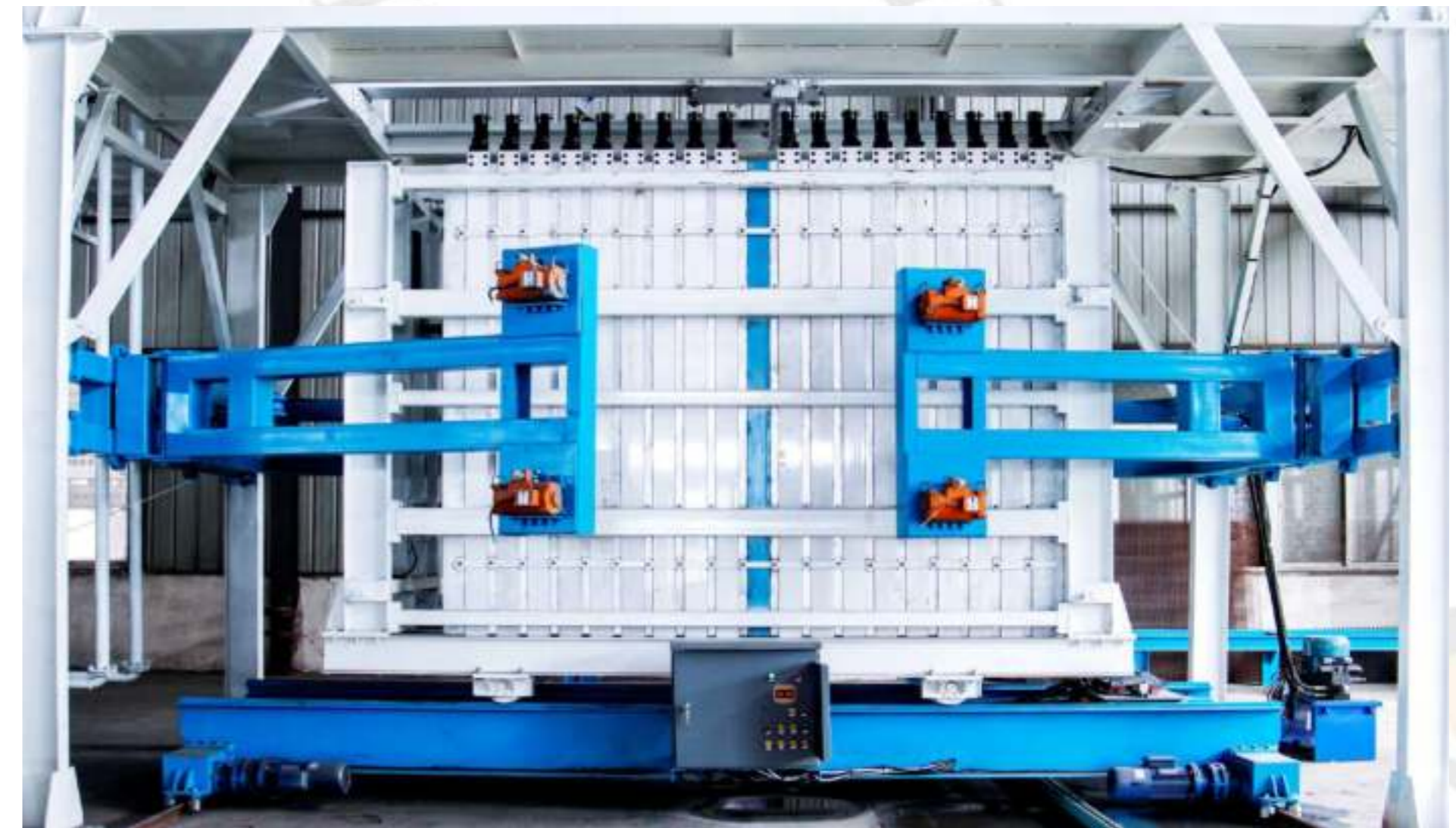
Compared with traditional horizontal type moulding machine, VJ vertical type moulding machine features with higher output and higher income, suitable for the panels production with annual capacity over 100000m<sup>2</sup>.

该设备与传统卧式模具车相比, 具有产量高、收益大等特点, 适合年产量十万平方以上规模的板材生产。



# BRAND NEW VIBRATION AND AUTOMATIC CASTING SYSTEM

全新振动平台及自动浇筑系统



A 中心控制室  
Central Control Room



B 固定模具夹板  
Fixing Mould Clamp



C 搅拌灌浆管道  
Mixing Grouting Pipe



# EQUIPMENT PROJECT CASES

设备案例











**EQUIPMENT PROJECT CASES**





**EQUIPMENT  
PROJECT  
CASES**











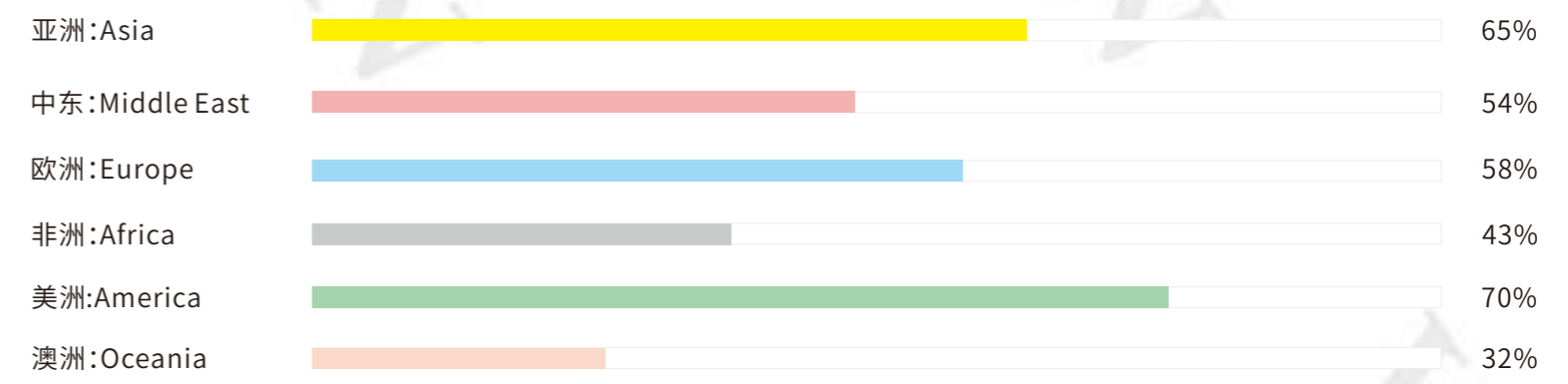


# GLOBAL CUSTOMERS DISTRIBUTION

客户分布图



## 市场份额占有率 / The Market Share Percentage



亚洲 Asia : Philippines, Sri Lanka,Thailand, Malaysia, Indonesia, Vietnam, India, Pakistan, Brunei, Nepal, Maldives, etc.

中东 Middle East: Saudi Arabia, Iran, Iraq, UAE(United Arab Emirates), Bahrain, Qatar, etc.

欧洲 Europe: Spain, Portugal, Cyprus, Ireland, Russia, Greece, Sweden, Germany, Bulgaria, Slovakia, Malta, etc.

非洲 Africa: Nigeria, Kenya, South Africa, Egypt, Angola, Uganda, Morocco, Mauritius, etc.

美洲 America: Brazil, Chile, Venezuela, Colombia, Bolivia, Panama, Costa Rica, Uruguay, Mexico, Netherlands Antilles, Antigua, Haiti, etc.

澳洲 Oceania: Australia, Fiji, French Polynesia, Papua New Guinea, etc.

